

PHILIPPINE BIDDING DOCUMENTS

**Procurement of
INFRASTRUCTURE
PROJECTS**

Government of the Republic of the Philippines

**Sixth Edition
July 2020**

Preface

These Philippine Bidding Documents (PBDs) for the procurement of Infrastructure Projects (hereinafter referred to also as the “Works”) through Competitive Bidding have been prepared by the Government of the Philippines for use by all branches, agencies, departments, bureaus, offices, or instrumentalities of the government, including government-owned and/or -controlled corporations, government financial institutions, state universities and colleges, local government units, and autonomous regional government. The procedures and practices presented in this document have been developed through broad experience, and are for mandatory use in projects that are financed in whole or in part by the Government of the Philippines or any foreign government/foreign or international financing institution in accordance with the provisions of the 2016 revised Implementing Rules and Regulations (IRR) of Republic Act (RA) No. 9184.

The PBDs are intended as a model for admeasurements (unit prices or unit rates in a bill of quantities) types of contract, which are the most common in Works contracting.

The Bidding Documents shall clearly and adequately define, among others: (i) the objectives, scope, and expected outputs and/or results of the proposed contract; (ii) the eligibility requirements of Bidders; (iii) the expected contract duration; and (iv) the obligations, duties, and/or functions of the winning Bidder.

Care should be taken to check the relevance of the provisions of the PBDs against the requirements of the specific Works to be procured. If duplication of a subject is inevitable in other sections of the document prepared by the Procuring Entity, care must be exercised to avoid contradictions between clauses dealing with the same matter.

Moreover, each section is prepared with notes intended only as information for the Procuring Entity or the person drafting the Bidding Documents. They shall not be included in the final documents. The following general directions should be observed when using the documents:

- a. All the documents listed in the Table of Contents are normally required for the procurement of Infrastructure Projects. However, they should be adapted as necessary to the circumstances of the particular Project.
- b. Specific details, such as the “*name of the Procuring Entity*” and “*address for bid submission*,” should be furnished in the Instructions to Bidders, Bid Data Sheet, and Special Conditions of Contract. The final documents should contain neither blank spaces nor options.
- c. This Preface and the footnotes or notes in italics included in the Invitation to Bid, BDS, General Conditions of Contract, Special Conditions of Contract, Specifications, Drawings, and Bill of Quantities are not part of the text of the final document, although they contain instructions that the Procuring Entity should strictly follow.
- d. The cover should be modified as required to identify the Bidding Documents as to the names of the Project, Contract, and Procuring Entity, in addition to date of issue.

- e. Modifications for specific Procurement Project details should be provided in the Special Conditions of Contract as amendments to the Conditions of Contract. For easy completion, whenever reference has to be made to specific clauses in the Bid Data Sheet or Special Conditions of Contract, these terms shall be printed in bold typeface on Sections I (Instructions to Bidders) and III (General Conditions of Contract), respectively.
- f. For guidelines on the use of Bidding Forms and the procurement of Foreign-Assisted Projects, these will be covered by a separate issuance of the Government Procurement Policy Board.

TABLE OF CONTENTS

Glossary of Terms, Abbreviations, and Acronyms	5
Section I. Invitation to Bid.....	8
Section II. Instructions to Bidders	11
1. Scope of Bid.....	12
2. Funding Information	12
3. Bidding Requirements.....	12
4. Corrupt, Fraudulent, Collusive, Coercive, and Obstructive Practices	13
5. Eligible Bidders.....	13
6. Origin of Associated Goods	13
7. Subcontracts	14
8. Pre-Bid Conference.....	14
9. Clarification and Amendment of Bidding Documents.....	14
10. Documents Comprising the Bid: Eligibility and Technical Components	15
11. Documents Comprising the Bid: Financial Component	15
12. Alternative Bids	15
13. Bid Prices	16
14. Bid and Payment Currencies.....	16
15. Bid Security.....	16
16. Sealing and Marking of Bids.....	16
17. Deadline for Submission of Bids	17
18. Opening and Preliminary Examination of Bids	17
19. Detailed Evaluation and Comparison of Bids.....	17
20. Post Qualification.....	17
21. Signing of the Contract	17
Section III. Bid Data Sheet	19
Section IV. General Conditions of Contract.....	21
1. Scope of Contract.....	22
2. Sectional Completion of Works	22
3. Possession of Site	22
4. The Contractor's Obligations.....	22
5. Performance Security	22
6. Site Investigation Reports	23

7.	Warranty.....	23
8.	Liability of the Contractor.....	23
9.	Termination for Other Causes.....	23
10.	Dayworks	23
11.	Program of Work.....	24
12.	Instructions, Inspections and Audits	24
13.	Advance Payment.....	24
14.	Progress Payments	24
15.	Operating and Maintenance Manuals.....	24
Section V. Special Conditions of Contract.....		26
Section VI. Specifications		29
Section VII. Drawings.....		31
Section VIII. Bill of Quantities		32
Section IX. Checklist of Technical and Financial Documents		34

Glossary of Terms, Abbreviations, and Acronyms

ABC – Approved Budget for the Contract.

ARCC – Allowable Range of Contract Cost.

BAC – Bids and Awards Committee.

Bid – A signed offer or proposal to undertake a contract submitted by a bidder in response to and in consonance with the requirements of the bidding documents. Also referred to as *Proposal* and *Tender*. (2016 revised IRR, Section 5[c])

Bidder – Refers to a contractor, manufacturer, supplier, distributor and/or consultant who submits a bid in response to the requirements of the Bidding Documents. (2016 revised IRR, Section 5[d])

Bidding Documents – The documents issued by the Procuring Entity as the bases for bids, furnishing all information necessary for a prospective bidder to prepare a bid for the Goods, Infrastructure Projects, and/or Consulting Services required by the Procuring Entity. (2016 revised IRR, Section 5[e])

BIR – Bureau of Internal Revenue.

BSP – Bangko Sentral ng Pilipinas.

CDA – Cooperative Development Authority.

Consulting Services – Refer to services for Infrastructure Projects and other types of projects or activities of the GOP requiring adequate external technical and professional expertise that are beyond the capability and/or capacity of the GOP to undertake such as, but not limited to: (i) advisory and review services; (ii) pre-investment or feasibility studies; (iii) design; (iv) construction supervision; (v) management and related services; and (vi) other technical services or special studies. (2016 revised IRR, Section 5[i])

Contract – Refers to the agreement entered into between the Procuring Entity and the Supplier or Manufacturer or Distributor or Service Provider for procurement of Goods and Services; Contractor for Procurement of Infrastructure Projects; or Consultant or Consulting Firm for Procurement of Consulting Services; as the case may be, as recorded in the Contract Form signed by the parties, including all attachments and appendices thereto and all documents incorporated by reference therein.

Contractor – is a natural or juridical entity whose proposal was accepted by the Procuring Entity and to whom the Contract to execute the Work was awarded. Contractor as used in these Bidding Documents may likewise refer to a supplier, distributor, manufacturer, or consultant.

CPI – Consumer Price Index.

DOLE – Department of Labor and Employment.

DTI – Department of Trade and Industry.

Foreign-funded Procurement or Foreign-Assisted Project – Refers to procurement whose funding source is from a foreign government, foreign or international financing institution as specified in the Treaty or International or Executive Agreement. (2016 revised IRR, Section 5[b]).

GFI – Government Financial Institution.

GOCC – Government-owned and/or –controlled corporation.

Goods – Refer to all items, supplies, materials and general support services, except Consulting Services and Infrastructure Projects, which may be needed in the transaction of public businesses or in the pursuit of any government undertaking, project or activity, whether in the nature of equipment, furniture, stationery, materials for construction, or personal property of any kind, including non-personal or contractual services such as the repair and maintenance of equipment and furniture, as well as trucking, hauling, janitorial, security, and related or analogous services, as well as procurement of materials and supplies provided by the Procuring Entity for such services. The term “related” or “analogous services” shall include, but is not limited to, lease or purchase of office space, media advertisements, health maintenance services, and other services essential to the operation of the Procuring Entity. (2016 revised IRR, Section 5[r])

GOP – Government of the Philippines.

Infrastructure Projects – Include the construction, improvement, rehabilitation, demolition, repair, restoration or maintenance of roads and bridges, railways, airports, seaports, communication facilities, civil works components of information technology projects, irrigation, flood control and drainage, water supply, sanitation, sewerage and solid waste management systems, shore protection, energy/power and electrification facilities, national buildings, school buildings, hospital buildings, and other related construction projects of the government. Also referred to as *civil works or works*. (2016 revised IRR, Section 5[u])

LGUs – Local Government Units.

NFCC – Net Financial Contracting Capacity.

NGA – National Government Agency.

PCAB – Philippine Contractors Accreditation Board.

PhilGEPS - Philippine Government Electronic Procurement System.

Procurement Project – refers to a specific or identified procurement covering goods, infrastructure project or consulting services. A Procurement Project shall be described, detailed, and scheduled in the Project Procurement Management Plan prepared by the agency which shall be consolidated in the procuring entity's Annual Procurement Plan. (GPPB Circular No. 06-2019 dated 17 July 2019)

PSA – Philippine Statistics Authority.

SEC – Securities and Exchange Commission.

SLCC – Single Largest Completed Contract.

UN – United Nations.

Section I. Invitation to Bid

Notes on the Invitation to Bid

The Invitation to Bid (IB) provides information that enables potential Bidders to decide whether to participate in the procurement at hand. The IB shall be posted in accordance with Section 21.2 of the 2016 revised IRR of RA No. 9184.

Apart from the essential items listed in the Bidding Documents, the IB should also indicate the following:

- a. The date of availability of the Bidding Documents, which shall be from the time the IB is first advertised/posted until the deadline for the submission and receipt of bids;
- b. The place where the Bidding Documents may be acquired or the website where it may be downloaded;
- c. The deadline for the submission and receipt of bids; and
- d. Any important bid evaluation criteria.

The IB should be incorporated into the Bidding Documents. The information contained in the IB must conform to the Bidding Documents and in particular to the relevant information in the Bid Data Sheet.



Republic of the Philippines
Department of Education
Region I

SCHOOLS DIVISION OFFICE - DAGUPAN CITY

**Invitation to Bid for
*REPAIR OF CLASSROOMS***

1. The *SCHOOLS DIVISION OFFICE - DAGUPAN CITY*, through the *BEFF 2021 REPAIR OF CLASSROOMS* intends to apply to the sum of Four Million One Hundred Seven Thousand Five Hundred Forty-Eight and 14/100 (**Php4,107,548.14**) to payments under the contract for each lot.

LOT	TITLE	ABC
LOT 1	<i>REPAIR OF CLASSROOMS – LASIP GRANDE ES</i>	<i>(Php2,053,774.07)</i>
LOT 2	<i>REPAIR OF CLASSROOMS – BLISS ES</i>	<i>(Php2,053,774.07)</i>

Bids received in excess of the ABC shall be automatically rejected at bid opening.

2. The *SCHOOLS DIVISION OFFICE - DAGUPAN CITY* now invites bids for the above Procurement Project. Completion of the Works is required **120 CALENDAR DAYS**. Bidders should have completed a contract similar to the Project. The description of an eligible bidder is contained in the Bidding Documents, particularly, in Section II (Instructions to Bidders).
3. Bidding will be conducted through open competitive bidding procedures using non-discretionary “*pass/fail*” criterion as specified in the 2016 revised Implementing Rules and Regulations (IRR) of Republic Act (RA) No. 9184.
4. Interested bidders may obtain further information from *SCHOOLS DIVISION OFFICE - DAGUPAN CITY* and inspect the Bidding Documents at the address given below from 8:00 am – 4:00 pm.
5. A complete set of Bidding Documents may be acquired by interested bidders on **July 15 to August 4, 2021** at 9:30 AM from given address and website/s below:

SCHOOLS DIVISION OFFICE – DAGUPAN CITY
SDO DAGUPAN CITY, BURGOS ST., POBLACION OESTE, DAGUPAN CITY, 2400
dagupan.city@depd.gov.ph
www.depeddagupan.com

The Bidding Documents may be purchased at the Division Office, Deped, Dagupan City upon accomplishing a bidder's information sheet and payment in cash of a non-refundable fee in the amount of Five Thousand Pesos (Php 5,000.00) only by the interested bidders and will be sent electronically thru email. Only the Checklist of Technical and Financial Documents shall be issued in hard copy form by the BAC Secretariat.

For online payment of bidding documents, you may deposit through:

ACCOUNT NAME: DEPT OF EDUCATION DAGUPAN CITY
ACCOUNT NUMBER: 02001-000616-8
SERVICING BANK: PHILIPPINE VETERANS BANK, DAGUPAN CITY
BRANCH

At least **three (3) working days** prior to the date of the submission of bids. You may send the scanned copy of the deposit slip/reference number indicating the name and address of the prospective bidder to dagupan.city@deped.gov.ph The bidding documents and the bidder's information form will be sent through email upon receipt of the proof of payment.

6. The *SCHOOLS DIVISION OFFICE - DAGUPAN CITY* will hold a Pre-Bid Conference¹ on **July 23, 2021 | 10:00 AM** at CONFERENCE ROOM, *SDO DAGUPAN, BURGOS ST., POBLACION OESTE, DAGUPAN CITY* and/or through videoconferencing via *GOOGLE MEET* meet.google.com/zzq-xryt-kfx which shall be open to prospective bidders.
7. Bids must be duly received by the BAC Secretariat through **manual submission** at the office address at *IT Office, SDO DAGUPAN, BURGOS ST., POBLACION OESTE, DAGUPAN CITY*, on or before **August 4, 2021 at 9:30 AM**. Late bids shall not be accepted.
8. All bids must be accompanied by a bid security in any of the acceptable forms and in the amount stated in **ITB** Clause 16.
9. Bid opening shall be on **August 4, 2021 at 10:00 AM** at the **CONFERENCE ROOM, SDO DAGUPAN, BURGOS ST., POBLACION OESTE, DAGUPAN CITY**. Bids will be opened in the presence of the bidders' representatives who choose to attend the activity. All representatives must present Special Power of Attorney (SPA) with valid identification preferably company ID.
10. The *SCHOOLS DIVISION OFFICE - DAGUPAN CITY* reserves the right to reject any and all bids, declare a failure of bidding, or not award the contract at any time prior to contract award in accordance with Sections 35.6 and 41 of the 2016 revised Implementing Rules and Regulations (IRR) of RA No. 9184, without thereby incurring any liability to the affected bidder or bidders.
11. For further information, please refer to:

¹ May be deleted in case the ABC is less than One Million Pesos (PhP1,000,000) where the Procuring Entity may not hold a pre-bid conference.

MARCIANO U. SORIANO, JR. CESO VI
SCHOOLS DIVISION OFFICE – DAGUPAN CITY
SDO DAGUPAN CITY, BURGOS ST., POBLACION OESTE, DAGUPAN CITY, 2400
dagupan.city@deped.gov.ph
www.depeddagupan.com
0908 896 0411

12. You may visit the following websites:

For downloading of Bidding Documents: <https://portal.depeddagupan.com>

July 15, 2021

MARCIANO U. SORIANO, JR. CESO VI
CHAIRMAN, BAC

Section II. Instructions to Bidders

Notes on the Instructions to Bidders

This Section on the Instruction to Bidders (ITB) provides the information necessary for bidders to prepare responsive bids, in accordance with the requirements of the Procuring Entity. It also provides information on bid submission, eligibility check, opening and evaluation of bids, post-qualification, and on the award of contract.

1. Scope of Bid

The Procuring Entity, invites Bids for the REPAIR AND REHABILITATION OF SCHOOL BUILDINGS (3 CL) – LASIP GRANDE ES and REPAIR AND REHABILITATION OF SCHOOL BUILDINGS (3 CL) – BLISS ES.

The Procurement Project (referred to herein as “Project”) is for the construction of Works, as described in Section VI (Specifications).

2. Funding Information

2.1. The GOP through the source of funding as indicated below for 2021 in the amount of *Php2,053,774.07 – LASIP GRANDE ES; Php2,053,774.07- BLISS ES*

2.2. The source of funding is:

- a. NGA, the General Appropriations Act or Special Appropriations.

3. Bidding Requirements

The Bidding for the Project shall be governed by all the provisions of RA No. 9184 and its 2016 revised IRR, including its Generic Procurement Manual and associated policies, rules and regulations as the primary source thereof, while the herein clauses shall serve as the secondary source thereof.

Any amendments made to the IRR and other GPPB issuances shall be applicable only to the ongoing posting, advertisement, or invitation to bid by the BAC through the issuance of a supplemental or bid bulletin.

The Bidder, by the act of submitting its Bid, shall be deemed to have inspected the site, determined the general characteristics of the contracted Works and the conditions for this Project, such as the location and the nature of the work; (b) climatic conditions; (c) transportation facilities; (c) nature and condition of the terrain, geological conditions at the site communication facilities, requirements, location and availability of construction aggregates and other materials, labor, water, electric power and access roads; and (d) other factors that may affect the cost, duration and execution or implementation of the contract, project, or work and examine all instructions, forms, terms, and project requirements in the Bidding Documents.

4. Corrupt, Fraudulent, Collusive, Coercive, and Obstructive Practices

The Procuring Entity, as well as the Bidders and Contractors, shall observe the highest standard of ethics during the procurement and execution of the contract. They or through an agent shall not engage in corrupt, fraudulent, collusive, coercive, and obstructive practices defined under Annex “P” of the 2016 revised IRR of RA No. 9184 or other integrity violations in competing for the Project.

5. Eligible Bidders

5.1. Only Bids of Bidders found to be legally, technically, and financially capable will be evaluated.

5.2. The Bidder must have an experience of having completed a Single Largest Completed Contract (SLCC) that is similar to this Project, equivalent to at least fifty percent (50%) of the ABC adjusted, if necessary, by the Bidder to current prices using the PSA’s CPI, except under conditions provided for in Section 23.4.2.4 of the 2016 revised IRR of RA No. 9184.

A contract is considered to be “similar” to the contract to be bid if it has the major categories of work stated in the **BDS**.

5.3. For Foreign-funded Procurement, the Procuring Entity and the foreign government/foreign or international financing institution may agree on another track record requirement, as specified in the Bidding Document prepared for this purpose.

5.4. The Bidders shall comply with the eligibility criteria under Section 23.4.2 of the 2016 IRR of RA No. 9184.

6. Origin of Associated Goods

There is no restriction on the origin of Goods other than those prohibited by a decision of the UN Security Council taken under Chapter VII of the Charter of the UN.

7. Subcontracts

- 7.1. The Bidder may subcontract portions of the Project to the extent allowed by the Procuring Entity as stated herein, but in no case more than fifty percent (50%) of the Project.

The Procuring Entity has prescribed that:
[*Select one, delete other/s*]

- a. Subcontracting is allowed. The portions of Project and the maximum percentage allowed to be subcontracted are indicated in the **BDS**, which shall not exceed fifty percent (50%) of the contracted Works.
 - b. Subcontracting is not allowed.
- 7.1. [*If Procuring Entity has determined that subcontracting is allowed during the bidding , state:*] The Bidder must submit together with its Bid the documentary requirements of the subcontractor(s) complying with the eligibility criterial stated in **ITB** Clause 5 in accordance with Section 23.4 of the 2016 revised IRR of RA No. 9184 pursuant to Section 23.1 thereof.
- 7.2. [*If subcontracting is allowed during the contract implementation stage, state:*] The Supplier may identify its subcontractor during the contract implementation stage. Subcontractors identified during the bidding may be changed during the implementation of this Contract. Subcontractors must submit the documentary requirements under Section 23.1 of the 2016 revised IRR of RA No. 9184 and comply with the eligibility criteria specified in **ITB** Clause 5 to the implementing or end-user unit.
- 7.3. Subcontracting of any portion of the Project does not relieve the Contractor of any liability or obligation under the Contract. The Supplier will be responsible for the acts, defaults, and negligence of any subcontractor, its agents, servants, or workmen as fully as if these were the Contractor's own acts, defaults, or negligence, or those of its agents, servants, or workmen.

8. Pre-Bid Conference

The Procuring Entity will hold a pre-bid conference for this Project on the specified date and time and either at its physical address {*[insert if applicable]*} and/or through videoconferencing/webcasting} as indicated in paragraph 6 of the **IB**.

9. Clarification and Amendment of Bidding Documents

Prospective bidders may request for clarification on and/or interpretation of any part of the Bidding Documents. Such requests must be in writing and received by the Procuring Entity, either at its given address or through electronic mail indicated in the **IB**, at least ten (10) calendar days before the deadline set for the submission and receipt of Bids.

10. Documents Comprising the Bid: Eligibility and Technical Components

- 10.1. The first envelope shall contain the eligibility and technical documents of the Bid as specified in **Section IX. Checklist of Technical and Financial Documents**.
- 10.2. If the eligibility requirements or statements, the bids, and all other documents for submission to the BAC are in foreign language other than English, it must be accompanied by a translation in English, which shall be authenticated by the appropriate Philippine foreign service establishment, post, or the equivalent office having jurisdiction over the foreign bidder's affairs in the Philippines. For Contracting Parties to the Apostille Convention, only the translated documents shall be authenticated through an apostille pursuant to GPPB Resolution No. 13-2019 dated 23 May 2019. The English translation shall govern, for purposes of interpretation of the bid.
- 10.3. A valid PCAB License is required, and in case of joint ventures, a valid special PCAB License, and registration for the type and cost of the contract for this Project. Any additional type of Contractor license or permit shall be indicated in the **BDS**.
- 10.4. A List of Contractor's key personnel (e.g., Project Manager, Project Engineers, Materials Engineers, and Foremen) assigned to the contract to be bid, with their complete qualification and experience data shall be provided. These key personnel must meet the required minimum years of experience set in the **BDS**.
- 10.5. A List of Contractor's major equipment units, which are owned, leased, and/or under purchase agreements, supported by proof of ownership, certification of availability of equipment from the equipment lessor/vendor for the duration of the project, as the case may be, must meet the minimum requirements for the contract set in the **BDS**.

11. Documents Comprising the Bid: Financial Component

- 11.1. The second bid envelope shall contain the financial documents for the Bid as specified in **Section IX. Checklist of Technical and Financial Documents**.
- 11.2. Any bid exceeding the ABC indicated in paragraph 1 of the **IB** shall not be accepted.
- 11.3. For Foreign-funded procurement, a ceiling may be applied to bid prices provided the conditions are met under Section 31.2 of the 2016 revised IRR of RA No. 9184.

12. Alternative Bids

Bidders shall submit offers that comply with the requirements of the Bidding Documents, including the basic technical design as indicated in the drawings and

specifications. Unless there is a value engineering clause in the **BDS**, alternative Bids shall not be accepted.

13. Bid Prices

All bid prices for the given scope of work in the Project as awarded shall be considered as fixed prices, and therefore not subject to price escalation during contract implementation, except under extraordinary circumstances as determined by the NEDA and approved by the GPPB pursuant to the revised Guidelines for Contract Price Escalation guidelines.

14. Bid and Payment Currencies

14.1. Bid prices may be quoted in the local currency or tradeable currency accepted by the BSP at the discretion of the Bidder. However, for purposes of bid evaluation, Bids denominated in foreign currencies shall be converted to Philippine currency based on the exchange rate as published in the BSP reference rate bulletin on the day of the bid opening.

14.2. *Payment of the contract price shall be made in:*

[Select one, delete other/s]

a. Philippine Pesos.

b. *[indicate currency if procurement involves a foreign-denominated bid as allowed by the Procuring Entity, which shall be tradeable or acceptable by the BSP.]*

15. Bid Security

15.1. The Bidder shall submit a Bid Securing Declaration or any form of Bid Security in the amount indicated in the **BDS**, which shall be not less than the percentage of the ABC in accordance with the schedule in the **BDS**.

15.2. The Bid and bid security shall be valid until *[indicate date]*. Any bid not accompanied by an acceptable bid security shall be rejected by the Procuring Entity as non-responsive.

16. Sealing and Marking of Bids

Each Bidder shall submit one copy of the first and second components of its Bid.

The Procuring Entity may request additional hard copies and/or electronic copies of the Bid. However, failure of the Bidders to comply with the said request shall not be a ground for disqualification.

If the Procuring Entity allows the submission of bids through online submission to the given website or any other electronic means, the Bidder shall submit an electronic copy

of its Bid, which must be digitally signed. An electronic copy that cannot be opened or is corrupted shall be considered non-responsive and, thus, automatically disqualified.

17. Deadline for Submission of Bids

The Bidders shall submit on the specified date and time and either at its physical address or through online submission as indicated in paragraph 7 of the **IB**.

18. Opening and Preliminary Examination of Bids

18.1. The BAC shall open the Bids in public at the time, on the date, and at the place specified in paragraph 9 of the **IB**. The Bidders' representatives who are present shall sign a register evidencing their attendance. In case videoconferencing, webcasting or other similar technologies will be used, attendance of participants shall likewise be recorded by the BAC Secretariat.

In case the Bids cannot be opened as scheduled due to justifiable reasons, the rescheduling requirements under Section 29 of the 2016 revised IRR of RA No. 9184 shall prevail.

18.2. The preliminary examination of Bids shall be governed by Section 30 of the 2016 revised IRR of RA No. 9184.

19. Detailed Evaluation and Comparison of Bids

19.1. The Procuring Entity's BAC shall immediately conduct a detailed evaluation of all Bids rated "*passed*" using non-discretionary pass/fail criteria. The BAC shall consider the conditions in the evaluation of Bids under Section 32.2 of 2016 revised IRR of RA No. 9184.

19.2. If the Project allows partial bids, all Bids and combinations of Bids as indicated in the **BDS** shall be received by the same deadline and opened and evaluated simultaneously so as to determine the Bid or combination of Bids offering the lowest calculated cost to the Procuring Entity. Bid Security as required by **ITB** Clause 15 shall be submitted for each contract (lot) separately.

19.3. In all cases, the NFCC computation pursuant to Section 23.4.2.6 of the 2016 revised IRR of RA No. 9184 must be sufficient for the total of the ABCs for all the lots participated in by the prospective Bidder.

20. Post Qualification

Within a non-extendible period of five (5) calendar days from receipt by the Bidder of the notice from the BAC that it submitted the Lowest Calculated Bid, the Bidder shall submit its latest income and business tax returns filed and paid through the BIR Electronic Filing and Payment System (eFPS), and other appropriate licenses and permits required by law and stated in the **BDS**.

21. Signing of the Contract

The documents required in Section 37.2 of the 2016 revised IRR of RA No. 9184 shall form part of the Contract. Additional Contract documents are indicated in the **BDS**.

Section III. Bid Data Sheet

Notes on the Bid Data Sheet (BDS)

The Bid Data Sheet (BDS) consists of provisions that supplement, amend, or specify in detail, information, or requirements included in the ITB found in Section II, which are specific to each procurement.

This Section is intended to assist the Procuring Entity in providing the specific information in relation to corresponding clauses in the ITB and has to be prepared for each specific procurement.

The Procuring Entity should specify in the BDS information and requirements specific to the circumstances of the Procuring Entity, the processing of the procurement, and the bid evaluation criteria that will apply to the Bids. In preparing the BDS, the following aspects should be checked:

- a. Information that specifies and complements provisions of the ITB must be incorporated.
- b. Amendments and/or supplements, if any, to provisions of the ITB as necessitated by the circumstances of the specific procurement, must also be incorporated.

Bid Data Sheet

ITB Clause							
5.2	For this purpose, contracts similar to the Project refer to contracts which have the same major categories of work, which shall be: <i>SEE ATTACHED COPY OF POW/BOQ</i>						
7.1	<i>[Specify the portions of Works and the maximum percentage allowed to be subcontracted, which shall not be significant or material components of the Project as determined by the Procuring Entity.]</i>						
10.3	<i>[Specify if another Contractor license or permit is required.]</i>						
10.4	The key personnel must meet the required minimum years of experience set below: <table border="1" style="width: 100%; border-collapse: collapse;"> <thead> <tr> <th style="text-align: center;"><u>Key Personnel</u></th> <th style="text-align: center;"><u>General Experience</u></th> <th style="text-align: center;"><u>Relevant Experience</u></th> </tr> </thead> <tbody> <tr> <td style="height: 20px;"> </td> <td> </td> <td> </td> </tr> </tbody> </table>	<u>Key Personnel</u>	<u>General Experience</u>	<u>Relevant Experience</u>			
<u>Key Personnel</u>	<u>General Experience</u>	<u>Relevant Experience</u>					
10.5	The minimum major equipment requirements are the following: <table border="1" style="width: 100%; border-collapse: collapse;"> <thead> <tr> <th style="text-align: center;"><u>Equipment</u></th> <th style="text-align: center;"><u>Capacity</u></th> <th style="text-align: center;"><u>Number of Units</u></th> </tr> </thead> <tbody> <tr> <td style="height: 20px;"> </td> <td> </td> <td> </td> </tr> </tbody> </table>	<u>Equipment</u>	<u>Capacity</u>	<u>Number of Units</u>			
<u>Equipment</u>	<u>Capacity</u>	<u>Number of Units</u>					
12	<i>[Insert Value Engineering clause if allowed.]</i>						
15.1	The bid security shall be in the form of a Bid Securing Declaration or any of the following forms and amounts: a. The amount of not less than _____ <i>[Insert two percent (2%) of ABC]</i> , if bid security is in cash, cashier's/manager's check, bank draft/guarantee or irrevocable letter of credit; b. The amount of not less than _____ <i>[Insert five percent (5%) of ABC]</i> if bid security is in Surety Bond.						
19.2	Partial bids are allowed, as follows: <i>[Insert grouping of lots by specifying the items and the quantity for every identified lot.]</i>						
20	<i>[List licenses and permits relevant to the Project and the corresponding law requiring it, e.g. Environmental Compliance Certificate, Certification that the project site is not within a geohazard zone, etc.]</i>						
21	Additional contract documents relevant to the Project that may be required by existing laws and/or the Procuring Entity, such as construction schedule and S-curve, manpower schedule, construction methods, equipment utilization schedule, construction safety and health program approved by the DOLE, and other acceptable tools of project scheduling.						

Section IV. General Conditions of Contract

Notes on the General Conditions of Contract

The General Conditions of Contract (GCC) in this Section, read in conjunction with the Special Conditions of Contract in Section V and other documents listed therein, should be a complete document expressing all the rights and obligations of the parties.

Matters governing performance of the Contractor, payments under the contract, or matters affecting the risks, rights, and obligations of the parties under the contract are included in the GCC and Special Conditions of Contract.

Any complementary information, which may be needed, shall be introduced only through the Special Conditions of Contract.

1. **Scope of Contract**

This Contract shall include all such items, although not specifically mentioned, that can be reasonably inferred as being required for its completion as if such items were expressly mentioned herein. All the provisions of RA No. 9184 and its 2016 revised IRR, including the Generic Procurement Manual, and associated issuances, constitute the primary source for the terms and conditions of the Contract, and thus, applicable in contract implementation. Herein clauses shall serve as the secondary source for the terms and conditions of the Contract.

This is without prejudice to Sections 74.1 and 74.2 of the 2016 revised IRR of RA No. 9184 allowing the GPPB to amend the IRR, which shall be applied to all procurement activities, the advertisement, posting, or invitation of which were issued after the effectivity of the said amendment.

2. **Sectional Completion of Works**

If sectional completion is specified in the **Special Conditions of Contract (SCC)**, references in the Conditions of Contract to the Works, the Completion Date, and the Intended Completion Date shall apply to any Section of the Works (other than references to the Completion Date and Intended Completion Date for the whole of the Works).

3. **Possession of Site**

3.1 The Procuring Entity shall give possession of all or parts of the Site to the Contractor based on the schedule of delivery indicated in the **SCC**, which corresponds to the execution of the Works. If the Contractor suffers delay or incurs cost from failure on the part of the Procuring Entity to give possession in accordance with the terms of this clause, the Procuring Entity's Representative shall give the Contractor a Contract Time Extension and certify such sum as fair to cover the cost incurred, which sum shall be paid by Procuring Entity.

3.2 If possession of a portion is not given by the above date, the Procuring Entity will be deemed to have delayed the start of the relevant activities. The resulting adjustments in contract time to address such delay may be addressed through contract extension provided under Annex "E" of the 2016 revised IRR of RA No. 9184.

4. **The Contractor's Obligations**

The Contractor shall employ the key personnel named in the Schedule of Key Personnel indicating their designation, in accordance with **ITB** Clause 10.3 and specified in the **BDS**, to carry out the supervision of the Works.

The Procuring Entity will approve any proposed replacement of key personnel only if their relevant qualifications and abilities are equal to or better than those of the personnel listed in the Schedule.

5. **Performance Security**

- 5.1. Within ten (10) calendar days from receipt of the Notice of Award from the Procuring Entity but in no case later than the signing of the contract by both parties, the successful Bidder shall furnish the performance security in any of the forms prescribed in Section 39 of the 2016 revised IRR.
- 5.2. The Contractor, by entering into the Contract with the Procuring Entity, acknowledges the right of the Procuring Entity to institute action pursuant to RA No. 3688 against any subcontractor be they an individual, firm, partnership, corporation, or association supplying the Contractor with labor, materials and/or equipment for the performance of this Contract.

6. Site Investigation Reports

The Contractor, in preparing the Bid, shall rely on any Site Investigation Reports referred to in the SCC supplemented by any information obtained by the Contractor.

7. Warranty

- 7.1. In case the Contractor fails to undertake the repair works under Section 62.2.2 of the 2016 revised IRR, the Procuring Entity shall forfeit its performance security, subject its property(ies) to attachment or garnishment proceedings, and perpetually disqualify it from participating in any public bidding. All payables of the GOP in his favor shall be offset to recover the costs.
- 7.2. The warranty against Structural Defects/Failures, except that occasioned-on force majeure, shall cover the period from the date of issuance of the Certificate of Final Acceptance by the Procuring Entity. Specific duration of the warranty is found in the SCC.

8. Liability of the Contractor

Subject to additional provisions, if any, set forth in the SCC, the Contractor's liability under this Contract shall be as provided by the laws of the Republic of the Philippines.

If the Contractor is a joint venture, all partners to the joint venture shall be jointly and severally liable to the Procuring Entity.

9. Termination for Other Causes

Contract termination shall be initiated in case it is determined *prima facie* by the Procuring Entity that the Contractor has engaged, before, or during the implementation of the contract, in unlawful deeds and behaviors relative to contract acquisition and implementation, such as, but not limited to corrupt, fraudulent, collusive, coercive, and obstructive practices as stated in ITB Clause 4.

10. Dayworks

Subject to the guidelines on Variation Order in Annex “E” of the 2016 revised IRR of RA No. 9184, and if applicable as indicated in the **SCC**, the Dayworks rates in the Contractor’s Bid shall be used for small additional amounts of work only when the Procuring Entity’s Representative has given written instructions in advance for additional work to be paid for in that way.

11. Program of Work

11.1. The Contractor shall submit to the Procuring Entity’s Representative for approval the said Program of Work showing the general methods, arrangements, order, and timing for all the activities in the Works. The submissions of the Program of Work are indicated in the **SCC**.

11.2. The Contractor shall submit to the Procuring Entity’s Representative for approval an updated Program of Work at intervals no longer than the period stated in the **SCC**. If the Contractor does not submit an updated Program of Work within this period, the Procuring Entity’s Representative may withhold the amount stated in the **SCC** from the next payment certificate and continue to withhold this amount until the next payment after the date on which the overdue Program of Work has been submitted.

12. Instructions, Inspections and Audits

The Contractor shall permit the GOP or the Procuring Entity to inspect the Contractor’s accounts and records relating to the performance of the Contractor and to have them audited by auditors of the GOP or the Procuring Entity, as may be required.

13. Advance Payment

The Procuring Entity shall, upon a written request of the Contractor which shall be submitted as a Contract document, make an advance payment to the Contractor in an amount not exceeding fifteen percent (15%) of the total contract price, to be made in lump sum, or at the most two installments according to a schedule specified in the **SCC**, subject to the requirements in Annex “E” of the 2016 revised IRR of RA No. 9184.

14. Progress Payments

The Contractor may submit a request for payment for Work accomplished. Such requests for payment shall be verified and certified by the Procuring Entity’s Representative/Project Engineer. Except as otherwise stipulated in the **SCC**, materials and equipment delivered on the site but not completely put in place shall not be included for payment.

15. Operating and Maintenance Manuals

15.1. If required, the Contractor will provide “as built” Drawings and/or operating and maintenance manuals as specified in the **SCC**.

- 15.2. If the Contractor does not provide the Drawings and/or manuals by the dates stated above, or they do not receive the Procuring Entity's Representative's approval, the Procuring Entity's Representative may withhold the amount stated in the SCC from payments due to the Contractor.

Section V. Special Conditions of Contract

Notes on the Special Conditions of Contract

Similar to the BDS, the clauses in this Section are intended to assist the Procuring Entity in providing contract-specific information in relation to corresponding clauses in the GCC found in Section IV.

The Special Conditions of Contract (SCC) complement the GCC, specifying contractual requirements linked to the special circumstances of the Procuring Entity, the Procuring Entity's country, the sector, and the Works procured. In preparing this Section, the following aspects should be checked:

- a. Information that complements provisions of the GCC must be incorporated.
- b. Amendments and/or supplements to provisions of the GCC as necessitated by the circumstances of the specific purchase, must also be incorporated.

However, no special condition which defeats or negates the general intent and purpose of the provisions of the GCC should be incorporated herein.

Special Conditions of Contract

GCC Clause	
2	<i>[If different dates are specified for completion of the Works by section, i.e. “sectional completion,” these dates should be listed here.]</i>
4.1	<i>[Specify the schedule of delivery of the possession of the site to the Contractor, whether full or in part.]</i>
6	The site investigation reports are: <i>[list here the required site investigation reports.]</i>
7.2	<p><i>[Select one, delete the other.]</i></p> <p><i>[In case of permanent structures, such as buildings of types 4 and 5 as classified under the National Building Code of the Philippines and other structures made of steel, iron, or concrete which comply with relevant structural codes (e.g., DPWH Standard Specifications), such as, but not limited to, steel/concrete bridges, flyovers, aircraft movement areas, ports, dams, tunnels, filtration and treatment plants, sewerage systems, power plants, transmission and communication towers, railway system, and other similar permanent structures:]</i> Fifteen (15) years.</p> <p><i>[In case of semi-permanent structures, such as buildings of types 1, 2, and 3 as classified under the National Building Code of the Philippines, concrete/asphalt roads, concrete river control, drainage, irrigation lined canals, river landing, deep wells, rock causeway, pedestrian overpass, and other similar semi-permanent structures:]</i> Five (5) years.</p> <p><i>[In case of other structures, such as bailey and wooden bridges, shallow wells, spring developments, and other similar structures:]</i> Two (2) years.</p>
10	<p><i>[Select one, delete the other:]</i></p> <p style="padding-left: 40px;">a. Dayworks are applicable at the rate shown in the Contractor’s original Bid.</p> <p style="padding-left: 40px;">b. No dayworks are applicable to the contract.</p>
11.1	The Contractor shall submit the Program of Work to the Procuring Entity’s Representative within <i>[insert number]</i> days of delivery of the Notice of Award.
11.2	The amount to be withheld for late submission of an updated Program of Work is <i>[insert amount]</i> .
13	The amount of the advance payment is <i>[insert amount as percentage of the contract price that shall not exceed 15% of the total contract price and schedule of payment]</i> .
14	<i>[If allowed by the Procuring Entity, state:]</i> Materials and equipment delivered on the site but not completely put in place shall be included for payment.
15.1	The date by which operating and maintenance manuals are required is <i>[date]</i> .

	The date by which “as built” drawings are required is <i>[date]</i> .
15.2	The amount to be withheld for failing to produce “as built” drawings and/or operating and maintenance manuals by the date required is <i>[amount in local currency]</i> .

Section VI. Specifications

Notes on Specifications

A set of precise and clear specifications is a prerequisite for Bidders to respond realistically and competitively to the requirements of the Procuring Entity without qualifying or conditioning their Bids. In the context of international competitive bidding, the specifications must be drafted to permit the widest possible competition and, at the same time, present a clear statement of the required standards of workmanship, materials, and performance of the goods and services to be procured. Only if this is done will the objectives of economy, efficiency, and fairness in procurement be realized, responsiveness of Bids be ensured, and the subsequent task of bid evaluation facilitated. The specifications should require that all goods and materials to be incorporated in the Works be new, unused, of the most recent or current models, and incorporate all recent improvements in design and materials unless provided otherwise in the Contract.

Samples of specifications from previous similar projects are useful in this respect. The use of metric units is mandatory. Most specifications are normally written specially by the Procuring Entity or its representative to suit the Works at hand. There is no standard set of Specifications for universal application in all sectors in all regions, but there are established principles and practices, which are reflected in these PBDs.

There are considerable advantages in standardizing General Specifications for repetitive Works in recognized public sectors, such as highways, ports, railways, urban housing, irrigation, and water supply, in the same country or region where similar conditions prevail. The General Specifications should cover all classes of workmanship, materials, and equipment commonly involved in construction, although not necessarily to be used in a particular Works Contract. Deletions or addenda should then adapt the General Specifications to the particular Works.

Care must be taken in drafting specifications to ensure that they are not restrictive. In the specification of standards for goods, materials, and workmanship, recognized international standards should be used as much as possible. Where other particular standards are used, whether national standards or other standards, the specifications should state that goods, materials, and workmanship that meet other authoritative standards, and which ensure substantially equal or higher quality than the standards mentioned, will also be acceptable. The following clause may be inserted in the SCC.

Sample Clause: Equivalency of Standards and Codes

Wherever reference is made in the Contract to specific standards and codes to be met by the goods and materials to be furnished, and work performed or tested, the provisions of the latest current edition or revision of the relevant standards and codes in effect shall apply, unless otherwise expressly stated in the Contract. Where such standards and codes are national, or relate to a particular country or region, other authoritative standards that ensure a substantially equal or higher quality than the standards and codes specified will be accepted

subject to the Procuring Entity's Representative's prior review and written consent. Differences between the standards specified and the proposed alternative standards shall be fully described in writing by the Contractor and submitted to the Procuring Entity's Representative at least twenty-eight (28) days prior to the date when the Contractor desires the Procuring Entity's Representative's consent. In the event the Procuring Entity's Representative determines that such proposed deviations do not ensure substantially equal or higher quality, the Contractor shall comply with the standards specified in the documents.

These notes are intended only as information for the Procuring Entity or the person drafting the Bidding Documents. They should not be included in the final Bidding Documents.

Note: Digest Specification is attached as annexed in pages 41-62.

Section VII. Drawings

The actual Drawings, including site plans, is attached as annexed in pages 41-62.

Section VIII. Bill of Quantities

Notes on the Bill of Quantities

Objectives

The objectives of the Bill of Quantities are:

- a. to provide sufficient information on the quantities of Works to be performed to enable Bids to be prepared efficiently and accurately; and
- b. when a Contract has been entered into, to provide a priced Bill of Quantities for use in the periodic valuation of Works executed.

In order to attain these objectives, Works should be itemized in the Bill of Quantities in sufficient detail to distinguish between the different classes of Works, or between Works of the same nature carried out in different locations or in other circumstances which may give rise to different considerations of cost. Consistent with these requirements, the layout and content of the Bill of Quantities should be as simple and brief as possible.

Daywork Schedule

A Daywork Schedule should be included only if the probability of unforeseen work, outside the items included in the Bill of Quantities, is high. To facilitate checking by the Entity of the realism of rates quoted by the Bidders, the Daywork Schedule should normally comprise the following:

- a. A list of the various classes of labor, materials, and Constructional Plant for which basic daywork rates or prices are to be inserted by the Bidder, together with a statement of the conditions under which the Contractor will be paid for work executed on a daywork basis.
- b. Nominal quantities for each item of Daywork, to be priced by each Bidder at Daywork rates as Bid. The rate to be entered by the Bidder against each basic Daywork item should include the Contractor's profit, overheads, supervision, and other charges.

Provisional Sums

A general provision for physical contingencies (quantity overruns) may be made by including a provisional sum in the Summary Bill of Quantities. Similarly, a contingency allowance for possible price increases should be provided as a provisional sum in the Summary Bill of Quantities. The inclusion of such provisional sums often facilitates budgetary approval by avoiding the need to request periodic supplementary approvals as the future need arises. Where such provisional sums or contingency allowances are used, the SCC should state the manner in which they will be used, and under whose authority (usually the Procuring Entity's Representative's).

The estimated cost of specialized work to be carried out, or of special goods to be supplied, by other contractors should be indicated in the relevant part of the Bill of Quantities as a particular provisional sum with an appropriate brief description. A separate procurement procedure is normally carried out by the Procuring Entity to select such specialized contractors. To provide an element of competition among the Bidders in respect of any facilities, amenities, attendance, etc., to be provided by the successful Bidder as prime Contractor for the use and convenience of the specialist contractors, each related provisional sum should be followed by an item in the Bill of Quantities inviting the Bidder to quote a sum for such amenities, facilities, attendance, etc.

Signature Box

A signature box shall be added at the bottom of each page of the Bill of Quantities where the authorized representative of the Bidder shall affix his signature. Failure of the authorized representative to sign each and every page of the Bill of Quantities shall be a cause for rejection of his bid.

These Notes for Preparing a Bill of Quantities are intended only as information for the Procuring Entity or the person drafting the Bidding Documents. They should not be included in the final documents.

Note: The Bill of Quantities is attached as annexed in pages 41-62.

Section IX. Checklist of Technical and Financial Documents

Notes on the Checklist of Technical and Financial Documents

The prescribed documents in the checklist are mandatory to be submitted in the Bid, but shall be subject to the following:

- a. GPPB Resolution No. 09-2020 on the efficient procurement measures during a State of Calamity or other similar issuances that shall allow the use of alternate documents in lieu of the mandated requirements; or
- b. any subsequent GPPB issuances adjusting the documentary requirements after the effectivity of the adoption of the PBDs.

The BAC shall be checking the submitted documents of each Bidder against this checklist to ascertain if they are all present, using a non-discretionary “pass/fail” criterion pursuant to Section 30 of the 2016 revised IRR of RA No. 9184.

Checklist of Technical and Financial Documents

I. TECHNICAL COMPONENT ENVELOPE

Class “A” Documents

Legal Documents

- (a) Valid PhilGEPS Registration Certificate (Platinum Membership) (all pages);
or
- (b) Registration certificate from Securities and Exchange Commission (SEC), Department of Trade and Industry (DTI) for sole proprietorship, or Cooperative Development Authority (CDA) for cooperatives or its equivalent document;
and
- (c) Mayor’s or Business permit issued by the city or municipality where the principal place of business of the prospective bidder is located, or the equivalent document for Exclusive Economic Zones or Areas;
and
- (e) Tax clearance per E.O. No. 398, s. 2005, as finally reviewed and approved by the Bureau of Internal Revenue (BIR).

Technical Documents

- (f) Statement of the prospective bidder of all its ongoing government and private contracts, including contracts awarded but not yet started, if any, whether similar or not similar in nature and complexity to the contract to be bid; **and**
- (g) Statement of the bidder’s Single Largest Completed Contract (SLCC) similar to the contract to be bid, except under conditions provided under the rules;
and
- (h) Philippine Contractors Accreditation Board (PCAB) License;
or
Special PCAB License in case of Joint Ventures;
and registration for the type and cost of the contract to be bid; **and**
- (i) Original copy of Bid Security. If in the form of a Surety Bond, submit also a certification issued by the Insurance Commission;
or
Original copy of Notarized Bid Securing Declaration; **and**
- (j) Project Requirements, which shall include the following:
 - a. Organizational chart for the contract to be bid;
 - b. List of contractor’s key personnel (*e.g.*, Project Manager, Project Engineers, Materials Engineers, and Foremen), to be assigned to the contract to be bid, with their complete qualification and experience data;
 - c. List of contractor’s major equipment units, which are owned, leased, and/or under purchase agreements, supported by proof of ownership or certification of availability of equipment from the equipment lessor/vendor for the duration of the project, as the case may be; **and**
- (k) Original duly signed Omnibus Sworn Statement (OSS);

and if applicable, Original Notarized Secretary's Certificate in case of a corporation, partnership, or cooperative; or Original Special Power of Attorney of all members of the joint venture giving full power and authority to its officer to sign the OSS and do acts to represent the Bidder.

Financial Documents

- (l) The prospective bidder's audited financial statements, showing, among others, the prospective bidder's total and current assets and liabilities, stamped "received" by the BIR or its duly accredited and authorized institutions, for the preceding calendar year which should not be earlier than two (2) years from the date of bid submission; **and**
- (m) The prospective bidder's computation of Net Financial Contracting Capacity (NFCC).

Class "B" Documents

- (n) If applicable, duly signed joint venture agreement (JVA) in accordance with RA No. 4566 and its IRR in case the joint venture is already in existence; **or** duly notarized statements from all the potential joint venture partners stating that they will enter into and abide by the provisions of the JVA in the instance that the bid is successful.

II. FINANCIAL COMPONENT ENVELOPE

- (o) Original of duly signed and accomplished Financial Bid Form; **and**

Other documentary requirements under RA No. 9184

- (p) Original of duly signed Bid Prices in the Bill of Quantities; **and**
- (q) Duly accomplished Detailed Estimates Form, including a summary sheet indicating the unit prices of construction materials, labor rates, and equipment rentals used in coming up with the Bid; **and**
- (r) Cash Flow by Quarter.





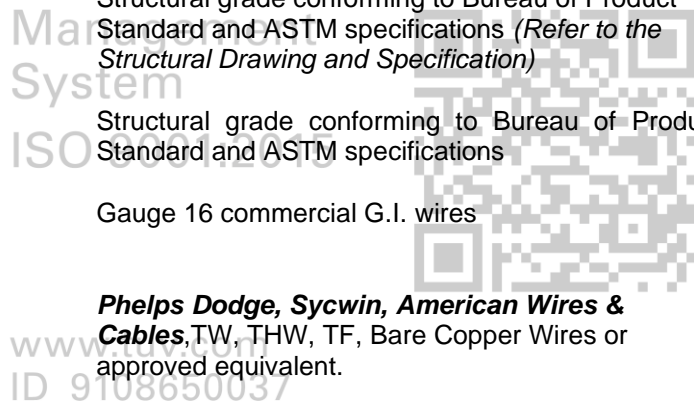
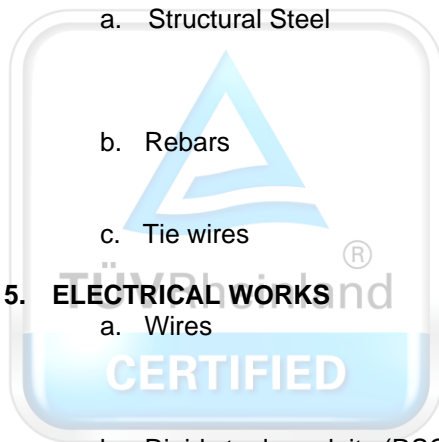
DIGEST SPECIFICATION

PROJECT: REPAIR AND REHABILITATION OF SCHOOL BUILDINGS –
3 CLASSROOMS
NAME OF SCHOOL: LASIP GRANDE ELEMENTARY SCHOOL

1. **ROOFING WORKS**

Corrugated-type Pre-painted Longspan Sheets and Pre-painted Bended Accessories, Gauge 26 by **DN Steel, Puyat Steel** or **Philmetal** or approved equivalent.
2. **CONCRETE WORKS**
 - a. Portland Cement **Holcim, Northern, Republic** or any equivalent equal
3. **MASONRY WORKS**

4"X8"X16" or 6"X8"X16" Non-load Bearing CHB
4. **STEEL BARS & METALS**
 - a. Structural Steel
Structural grade conforming to Bureau of Product Standard and ASTM specifications (*Refer to the Structural Drawing and Specification*)
 - b. Rebars
Structural grade conforming to Bureau of Product Standard and ASTM specifications
 - c. Tie wires
Gauge 16 commercial G.I. wires
5. **ELECTRICAL WORKS**
 - a. Wires
Phelps Dodge, Sycwin, American Wires & Cables, TW, THW, TF, Bare Copper Wires or approved equivalent.
 - b. Rigid steel conduits (RSC) **Matsushita, Wheatland** or approved equivalent.
 - c. PVC Conduits **Crown, Neltex, Emerald, Moldex** for PVC or approved equivalent.
 - d. Switches **BTicino, National** for 1-Gang, 2-Gang, 3-Gang Device or approved equivalent.
 - e. Convenience Outlet **BTicino, National** for, Duplex, Special Purpose with ground or approved equivalent.
 - f. Fluorescent Lamps **Firefly, Akari, Philips, G.E.**, Industrial Type Fixture with 1-40 Watts, 2-40 Watts or approved equivalent.
 - g. Incandescent Bulb **Firefly, Akari, Philips, G.E.**, 25 Watts-100 Watts or approved equivalent.
 - h. Ballast **Firefly, Akari, Philips, G.E.**, 230V, high power factor, Rapid start or approved equivalent.





Republic of the Philippines
DEPARTMENT OF EDUCATION
Region I
SCHOOLS DIVISION OFFICE
DAGUPAN CITY



- i. Circuit Breakers **Koten, Fuji, Mitsubishi** Bolt-on Type with molded case or approved equivalent.
- j. Junction Box 4 x 4 PVC by **Crown, Poly** or approved equivalent
- k. Utility Box 2 x 4 PVC by **Crown, Poly** or approved equivalent
- l. Panel Box **Koten** or approved equivalent

6. DOORS, WINDOWS & ACCESSORIES

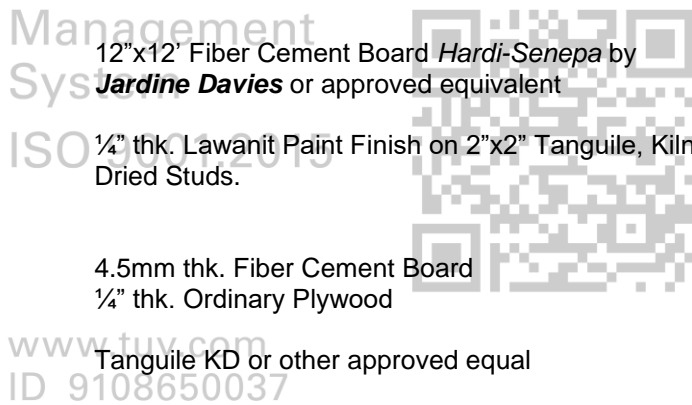
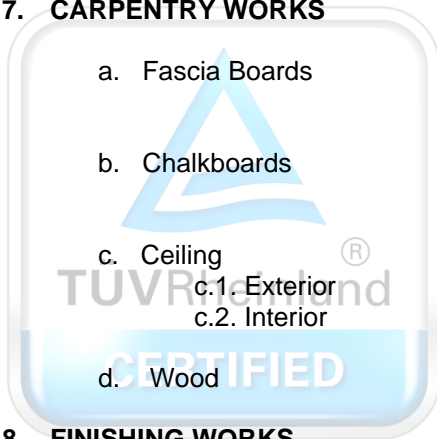
- a. Flush Doors / Hollow core (1 ¾" thk) with one face marine for toilet Doors
Tanguile Kiln Dried (1 ¾" thk)
- b. Door Jambs 2" x 6" Tanguile/Guijo
- c. Windows Clear Glass panel blades in aluminum jalousie with transom (satin-finish) on 2" x 6" Tanguile/Guijo sill.

7. CARPENTRY WORKS

- a. Fascia Boards 12"x12' Fiber Cement Board **Hardi-Senepa** by **Jardine Davies** or approved equivalent
- b. Chalkboards ¼" thk. Lawanit Paint Finish on 2"x2" Tanguile, Kiln Dried Studs.
- c. Ceiling
c.1. Exterior 4.5mm thk. Fiber Cement Board
c.2. Interior ¼" thk. Ordinary Plywood
- d. Wood Tanguile KD or other approved equal

8. FINISHING WORKS

- a. Paints **Davies** from Charter Philippines for Quick-Dry, Latex, Red Lead Primer and Enamel Paints (*refer to approved Color Scheme*)





1
A-1 PERSPECTIVE VIEW
SCALE: NTS

TABLE OF CONTENTS

REPUBLIC OF THE PHILIPPINES
OFFICE OF THE CITY/MUNICIPAL
ENGINEER/BUILDING OFFICIAL

DISTRICT/CITY/MUNICIPALITY

ARCHITECTURAL

- A-1 PERSPECTIVE VIEW, TABLE OF CONTENTS
- A-2 FLOOR PLAN, ELEVATIONS, RAMP DETAILS
- A-3 CROSS SECTION, LONGITUDINAL SECTION, ROOF PLAN, REFLECTED CEILING PLAN, VENT DETAIL
- A-4 SCHEDULE OF DOORS AND WINDOWS, GRILLE DETAIL, DETAILED CROSS SECTION

STRUCTURAL

- S-1 FOUNDATION PLAN, ROOF BEAM PLAN, FOOTING DETAIL, SCHEDULE OF COLUMN AND BEAM
- S-2 ROOF FRAMING PLAN, TRUSS DETAIL, PURLIN CONNECTION DETAILS

ELECTRICAL

- E-1 GEN. NOTES, LEGENDS, LIGHTING LAYOUT

SANITARY

OTHERS

LAND USE & ZONING

LINE & GRADE

ARCHITECTURAL

STRUCTURAL

SANITARY

ELECTRICAL

MECHANICAL

DRAWN BY :

Junelso
JUNELSON P. CULLADO
CADD OPERATOR
EFD-DepEd

CHECKED BY :

Jet
JET RAYMOND G. ALABASO
ARCHITECT III
EFD-DepEd

RECOMMENDING APPROVAL :

Luis
LUIS G. PURISIMA, JR.
ASST. CHIEF, EFD-AS
DepEd

APPROVED BY :

Annabelle
ANNABELLE R. PANGAN
CHIEF, EFD-AS
DepEd

PROJECT TITLE :

DEPED SCHOOL BUILDING
BLISS ELEMENTARY SCHOOL

DATE PREPARED :

PROJECT CODE:

DSB - MPSS

OWNER :

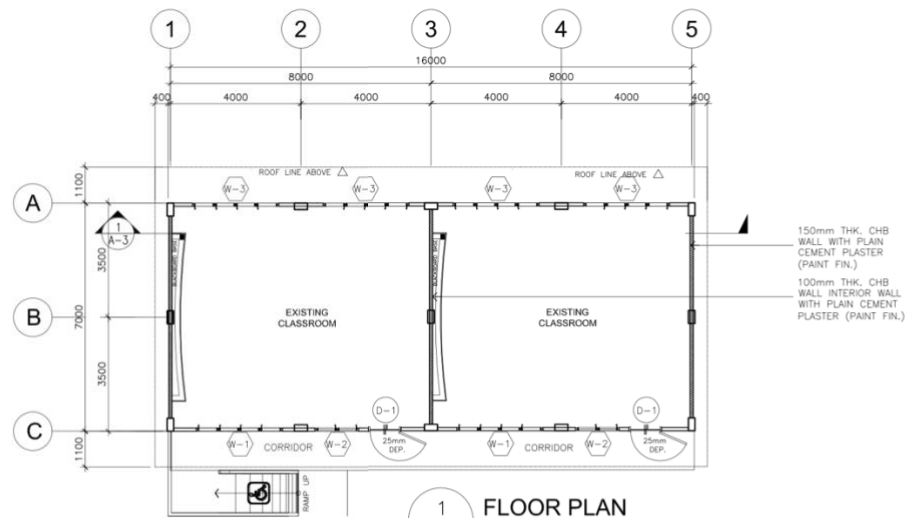
DEPARTMENT OF EDUCATION
DepED

SHEET CONTENTS :

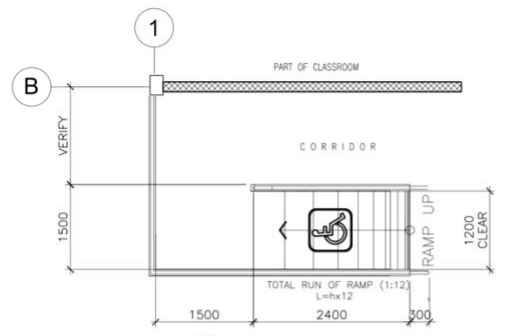
PERSPECTIVE VIEW,
TABLE OF CONTENTS

SHEET NO:

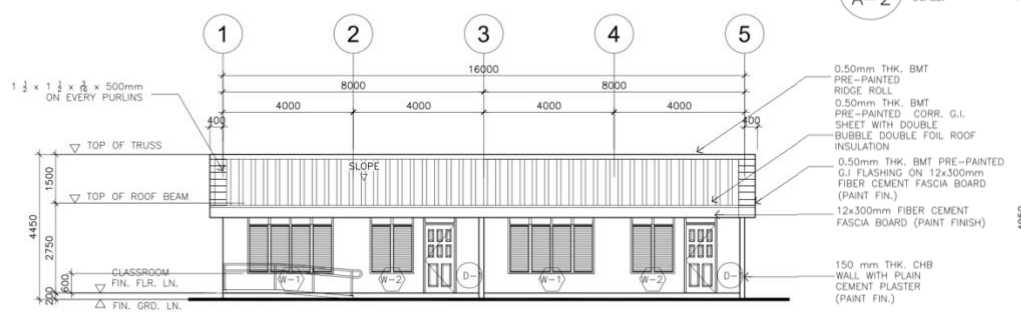
A-1
4



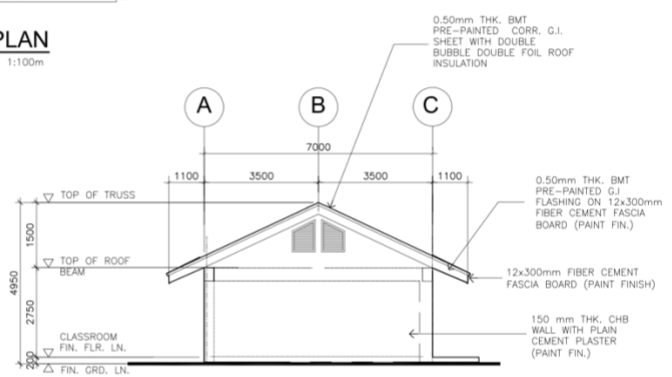
1 FLOOR PLAN
A-2 SCALE: 1:100m



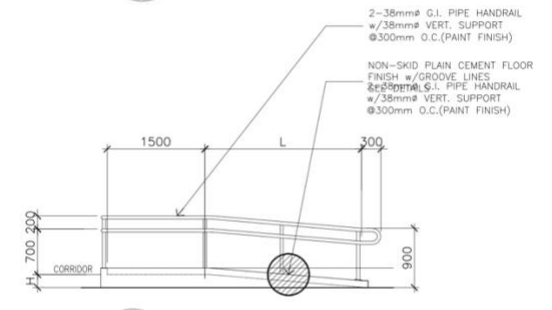
6 RAMP DETAIL
A-2



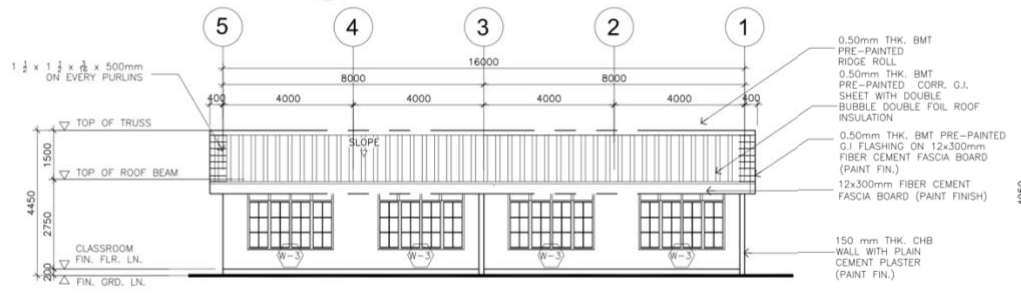
2 FRONT SIDE ELEVATION
A-2 SCALE: 1:100M



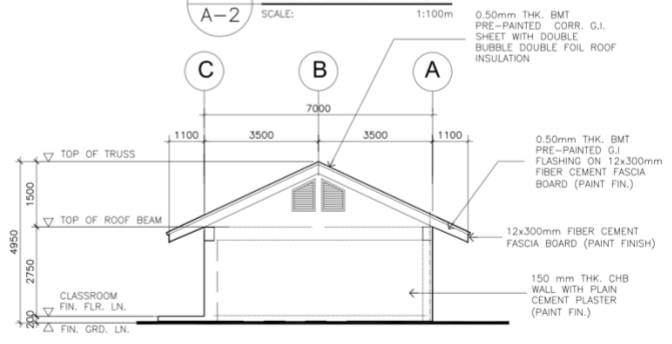
5 LEFT ELEVATION
A-2 SCALE: 1:100m



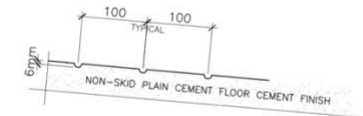
7 RAMP SECTION
A-2 SCALE 1:100M



3 REAR SIDE ELEVATION
A-2 SCALE: 1:100M



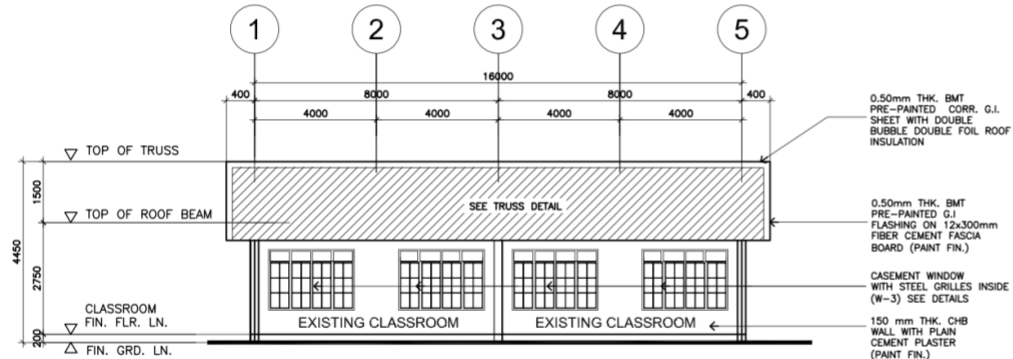
4 RIGHT SIDE ELEVATION
A-2 SCALE: 1:100M



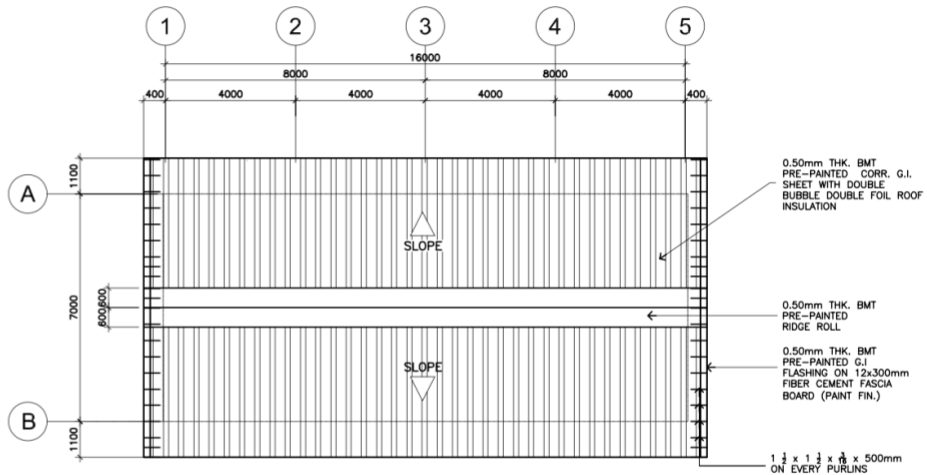
8 SPOT DETAIL
A-2 SCALE

NOTE:
IF THERE WILL BE CHANGE IN THE HEIGHT (h) OF THE FINISH FLOOR LINE (FFL) OF THE BUILDING, THE LENGTH OF THE RAMP SHALL BE COMPUTED AS (L=h x 12)

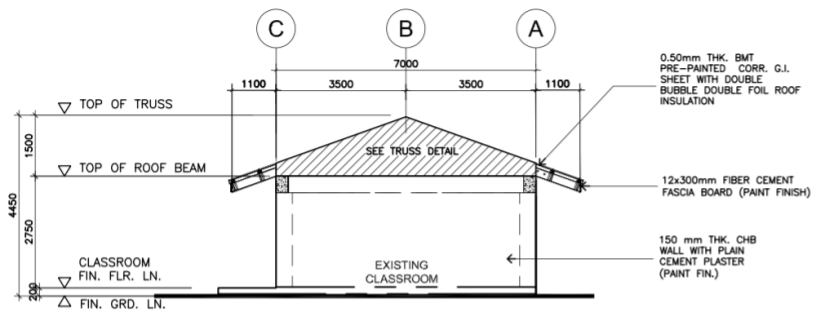
<p>REPUBLIC OF THE PHILIPPINES DEPARTMENT OF EDUCATION EDUCATION FACILITIES DIVISION MERALCO AVENUE, PASIG CITY</p>	DRAWN BY: JUNELSON P. CULLADO CAD OPERATOR EFD-DepEd	CHECKED BY: JET RAYMOND G. ALABASO ARCHITECT III EFD-DepEd	RECOMMENDING APPROVAL: LUIS E. PURISIMA, JR. ASST. CHIEF, EFD-AS DepEd	APPROVED BY: ANNABELLE R. PANGAN CHIEF, EFD-AS DepEd	PROJECT TITLE: DEPED SCHOOL BUILDING BLISS ELEMENTARY SCHOOL	PROJECT CODE: DSB - MPSS	OWNER: DEPARTMENT OF EDUCATION DepED	SHEET NO.: A-2 4
	DATE PREPARED: LOCATION:					SHEET CONTENTS: FLOOR PLAN, ELEVATIONS, RAMP DETAILS		



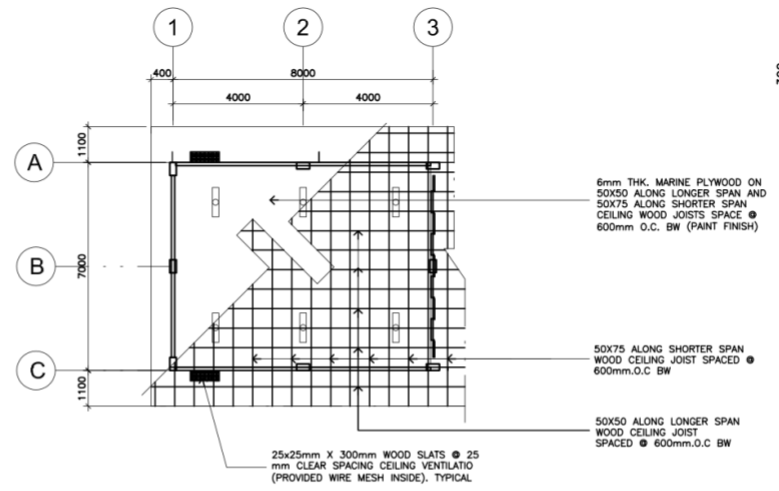
1 LONGITUDINAL SECTION
 A-3 SCALE : NTS



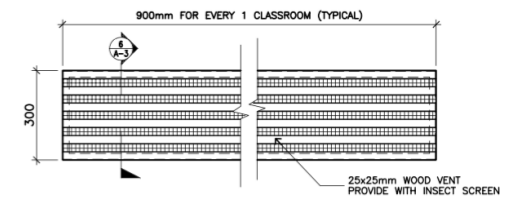
3 ROOF PLAN
 A-3 SCALE : 1:100M



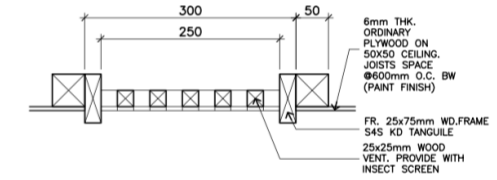
2 CROSS SECTION
 A-3 SCALE : 1:80M



4 REFLECTED CEILING PLAN
 A-3 SCALE: 1:100m



5 TYP. CLG. VENT PLAN DETAIL
 A-3 SCALE 1:10M



6 TYP. CLG. VENT SECTION DETAIL
 A-3 SCALE 1:10M



DRAWN BY :
 JUNELSON P. CULLADO
 CADD OPERATOR
 EFD-DepEd

CHECKED BY :
 JET RAYMOND G. ALABASO
 ARCHITECT III
 EFD-DepEd

RECOMMENDING APPROVAL :
 LUIS S. PURISIMA, JR.
 ASST. CHIEF, EFD-AS
 DepEd

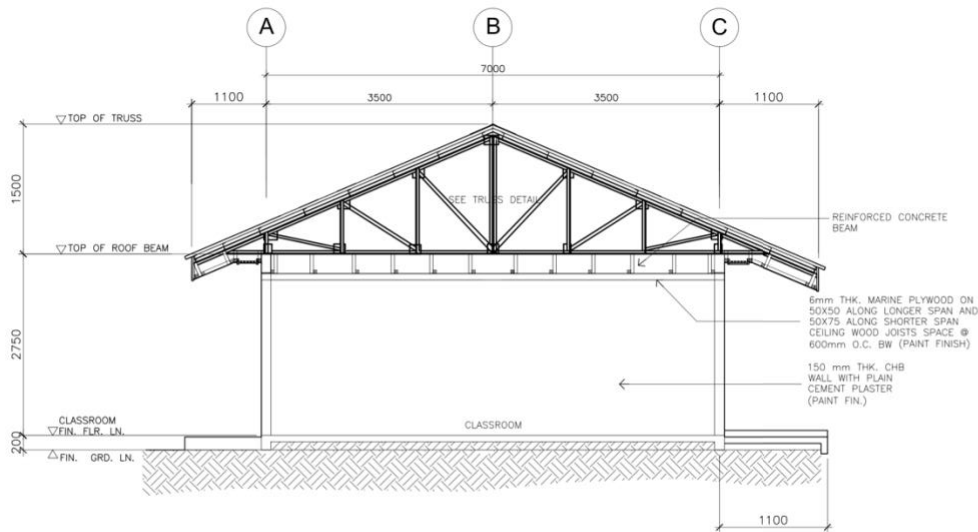
APPROVED BY :
 ANNABELLE R. PANGAN
 CHIEF, EFD-AS
 DepEd

PROJECT TITLE :
 DEPED SCHOOL BUILDING
 BLISS ELEMENTARY SCHOOL
 DATE PREPARED :

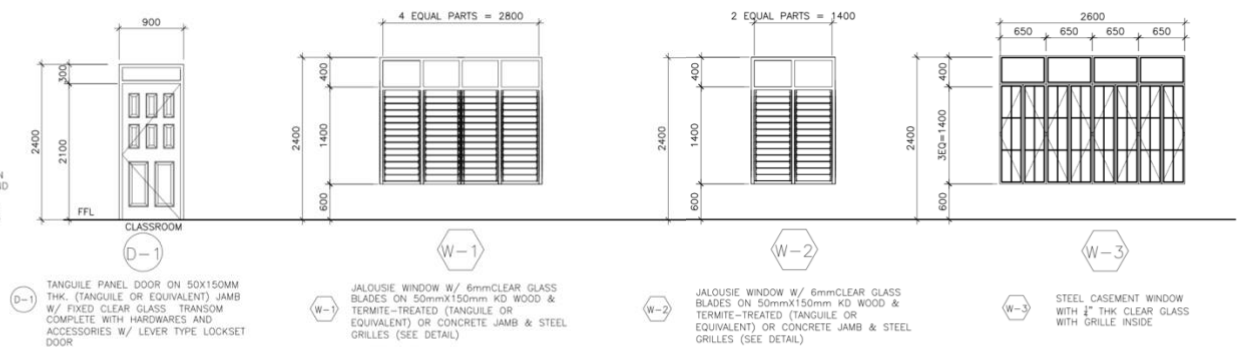
PROJECT CODE :
 DSB - MPSS

OWNER :
 DEPARTMENT OF EDUCATION
 DepED
 SHEET CONTENTS :
 CROSS SECTION, LONGITUDINAL
 SECTION, ROOF PLAN, REFLECTED
 CEILING PLAN, VENT DETAIL

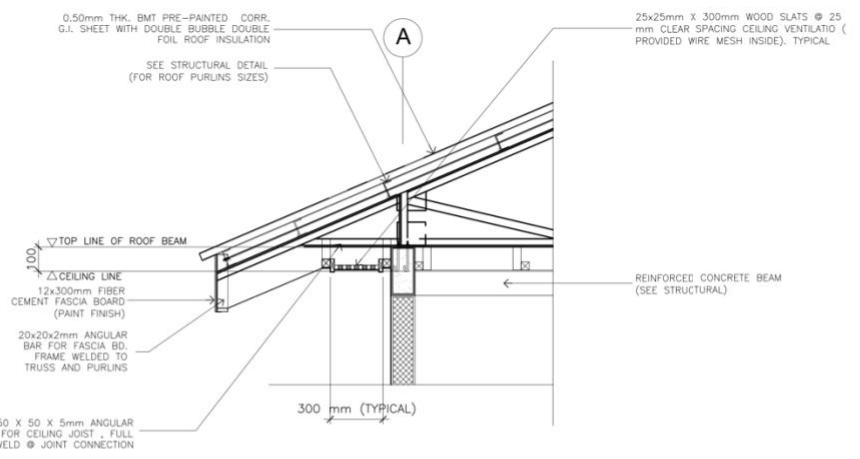
SHEET NO. :
 A-3
 4



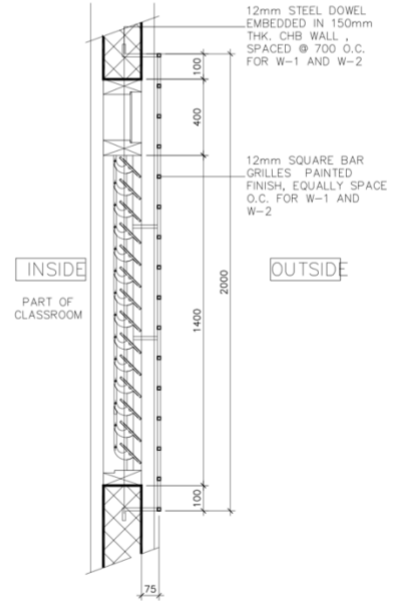
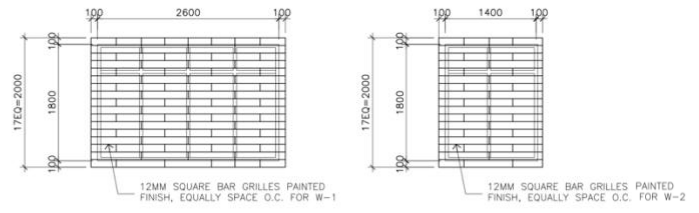
1 DETAILED CROSS SECTION
A-4 SCALE: 1:50M



3 DOOR & WINDOW SCHEDULES
A-4 SCALE: 1:50M

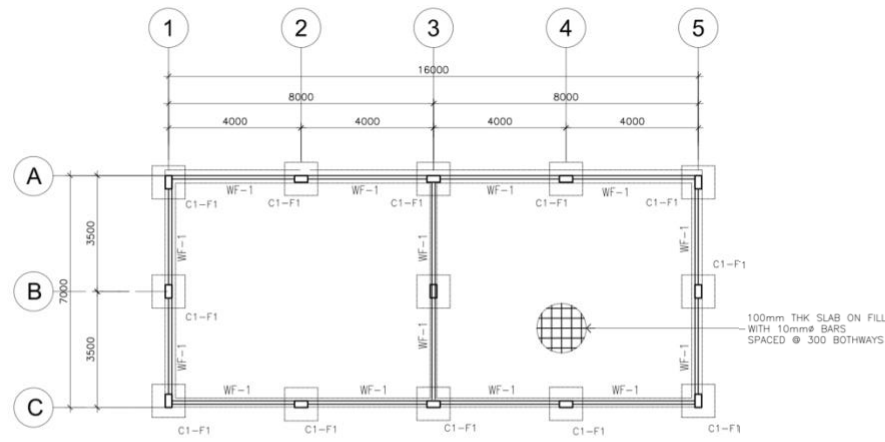


2 TYPICAL DETAIL SECTION OF EAVE (FRONT)
A-4 SCALE: 1:20M

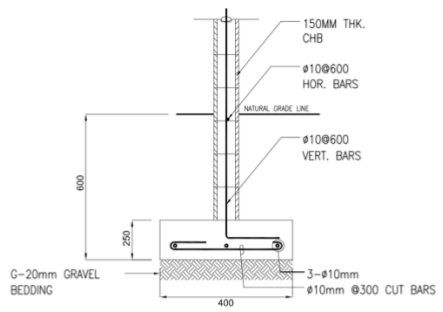


5 GRILLES DETAIL
A-4 SCALE: NTS

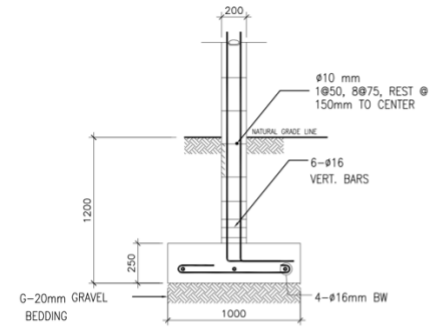
<p>REPUBLIC OF THE PHILIPPINES DEPARTMENT OF EDUCATION EDUCATION FACILITIES DIVISION MERALCO AVENUE, PASIG CITY</p>	<p>DRAWN BY: <i>Junelso P. Cullado</i> JUNELSON P. CULLADO CAD OPERATOR EFD-DepEd</p>	<p>CHECKED BY: <i>Jet Raymond G. Alabaso</i> JET RAYMOND G. ALABASO ARCHITECT III EFD-DepEd</p>	<p>RECOMMENDING APPROVAL: <i>Luis G. Purisima, Jr.</i> LUIS G. PURISIMA, JR. ASST. CHIEF, EFD-AS DepEd</p>	<p>APPROVED BY: <i>Annabelle R. Pangan</i> ANNABELLE R. PANGAN CHIEF, EFD-AS DepEd</p>	<p>PROJECT TITLE: DEPED SCHOOL BUILDING BLISS ELEMENTARY SCHOOL</p>	<p>PROJECT CODE: DSB - MPSS</p>	<p>OWNER: DEPARTMENT OF EDUCATION DepED</p>	<p>SHEET NO.: A-4 4</p>
	<p>SHEET CONTENTS: SCHEDULE OF DOORS AND WINDOWS, GRILLE DETAIL, DETAILED CROSS SECTION</p>							



1 FOUNDATION PLAN
S-1 SCALE: 1:100M

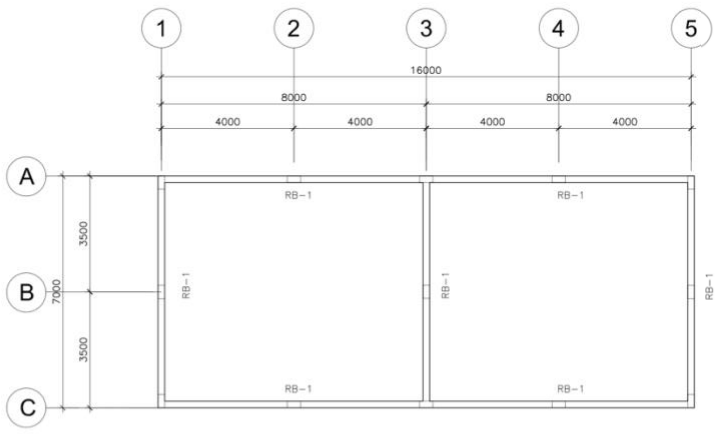


3 DETAIL OF WF-1
S-1 SCALE: NTS.

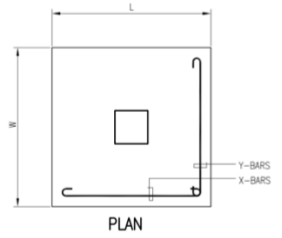
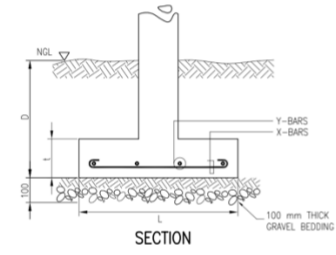


4 DETAIL OF C1-F1
S-1 SCALE: NTS.

SCHEDULE OF COLUMN AND BEAM		
LEVEL	C-1	RB-1
FOUNDATION LEVEL TO ROOF LEVEL		



2 ROOF BEAM PLAN
S-1 SCALE: 1:100M

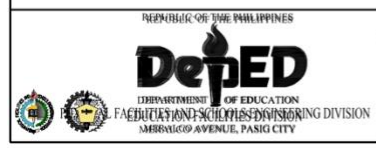


5 TYP. FOOTING DETAIL
S-1 SCALE: NTS.

SCHEDULE OF FOOTINGS							
FOOTING MARK	FOOTING DIMENSIONS (mm)				REINFORCEMENT		REMARKS
	LENGTH (L)	WIDTH (W)	DEPTH (D)	THICKNESS (t)	BAR X	BAR Y	
F-1	1000	1000	1200	250	4 - 16mmØ	4 - 16mmØ	SQUARE FOOTING

DESIGN CRITERIA :

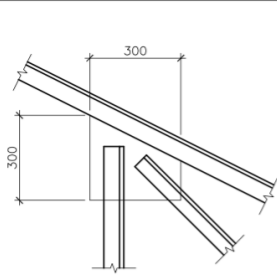
- A. CONCRETE
 $f_c' = 20.685 \text{ Mpa (3,000 Psi)}$, minimum compressive strength of concrete a 28 days unless otherwise specified.
- B. REBAR
 $f_y = 275.8 \text{ Mpa (40,000 Psi)}$, minimum yield strength of reinforcing bars unless otherwise specified.
- C. STRUCTURAL STEEL
 $F_y = 248 \text{ Mpa (36 Ksi)}$, specified minimum yield strength unless otherwise specified.
- D. FOUNDATION
 $SBP = 95.706 \text{ Kpa (2,000 Psf)}$, was used in the design for all footings. No footing shall rest on fill.



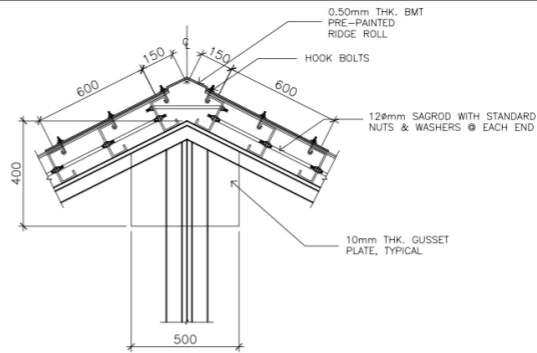
DRAWN BY : JUNELSON P. CULLADO CAD/D OPERATOR EFD-DepEd	CHECKED BY : WILFREDO D. ALARCON STRUCTURAL ENGINEER EFD-DepEd	RECOMMENDING APPROVAL : LUIS G. PURISIMA, JR. ASST. CHIEF, EFD-AS DepEd	APPROVED BY : ANNABELLE R. PANGAN CHIEF, EFD-AS DepEd
--	---	--	--

PROJECT TITLE : DEPED SCHOOL BUILDING BLISS ELEMENTARY SCHOOL DATE PREPARED :	PROJECT CODE : DSB - MPSS
--	------------------------------

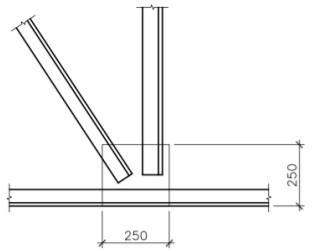
OWNER : DEPARTMENT OF EDUCATION DepED SHEET CONTENTS : FOUNDATION PLAN, ROOF BEAM PLAN, FOOTING DETAIL, SCHEDULE OF COLUMN AND BEAM	SHEET NO : S-1 2
---	--------------------------------------



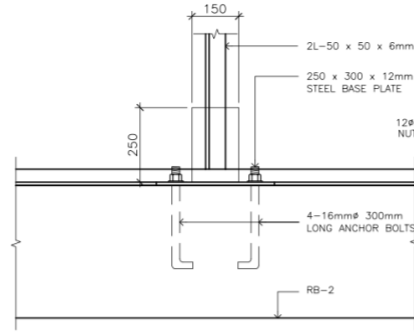
3 **DETAIL - 2**
S-2 SCALE: 1:10M



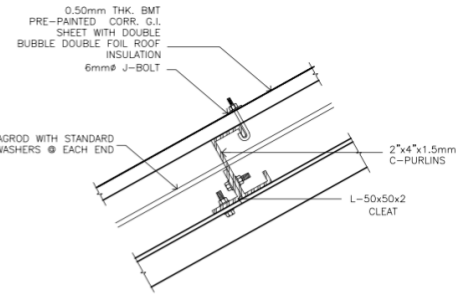
4 **RIDGE ROLL CONNECTION DETAIL**
S-2 SCALE: NTS



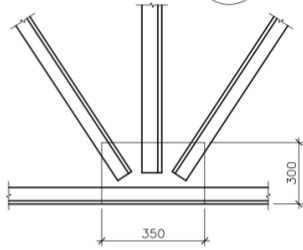
6 **DETAIL - 4**
S-2 SCALE: 1:10M



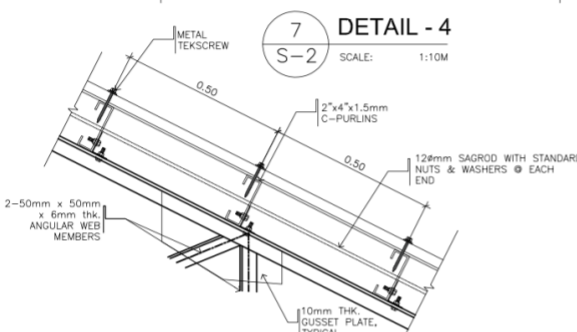
7 **DETAIL - 4**
S-2 SCALE: 1:10M



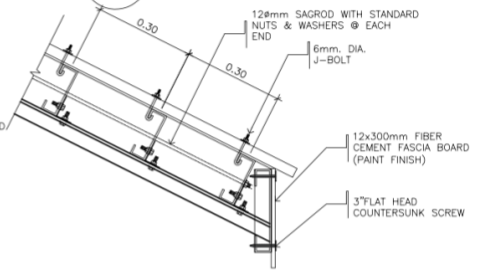
8 **CONNECTIO OF G.I SHEET ROOFING TO PURLIN**
S-2 SCALE: 1:5M



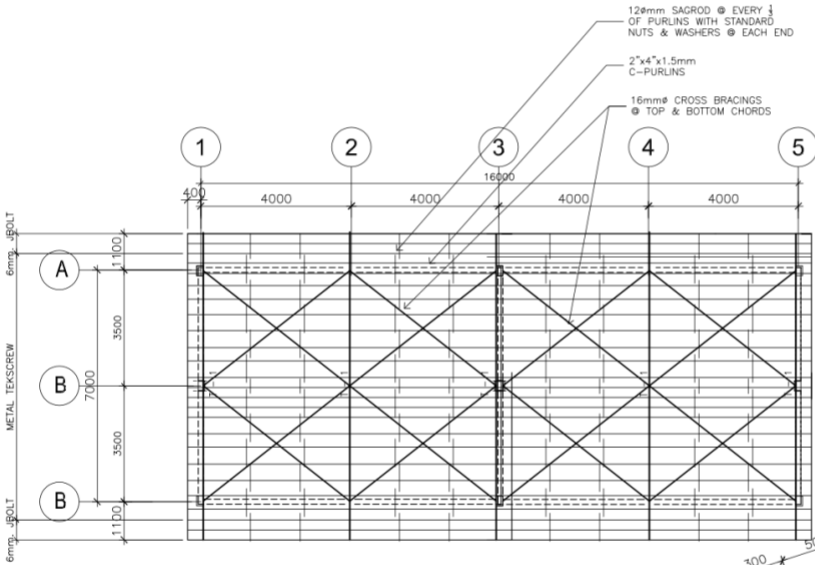
5 **DETAIL - 4**
S-2 SCALE: 1:10M



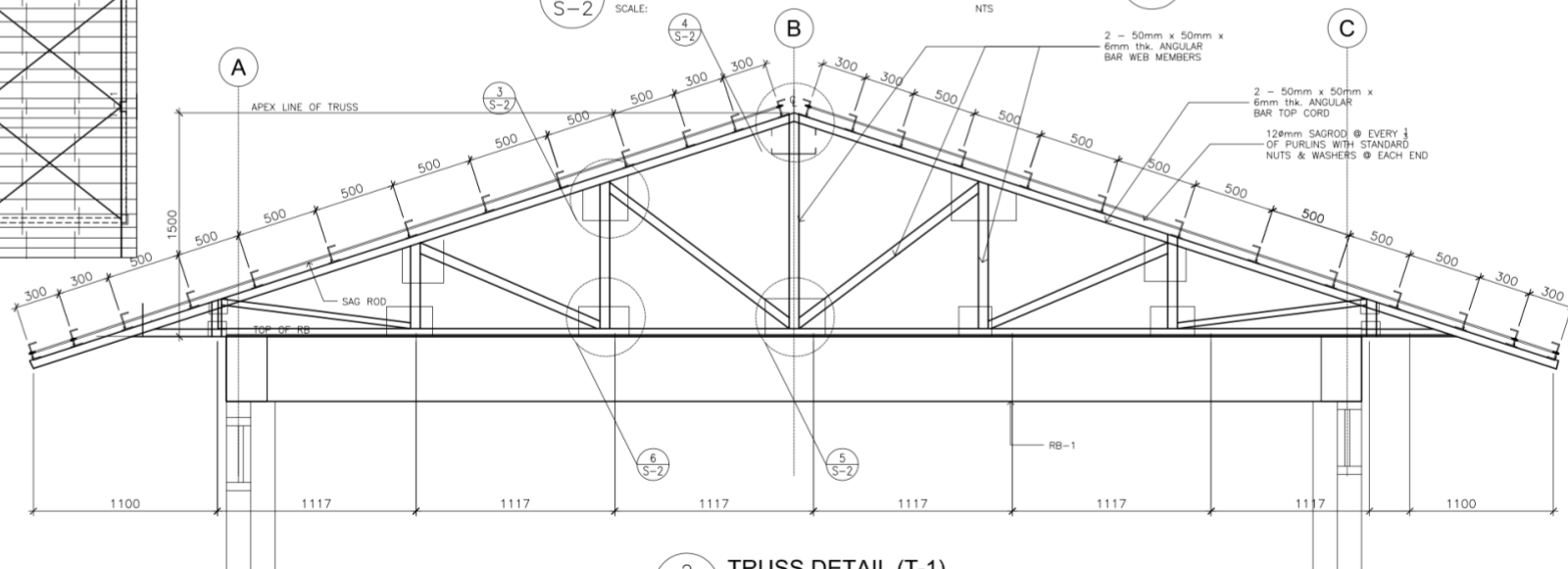
10 **WEB MEMBERS CONNECTION DET.**
S-2 SCALE: NTS



9 **FASCIA BOARD CONNECTION DET**
S-2 SCALE: NTS



1 **ROOF FRAMING PLAN**
S-2 SCALE: 1:100M

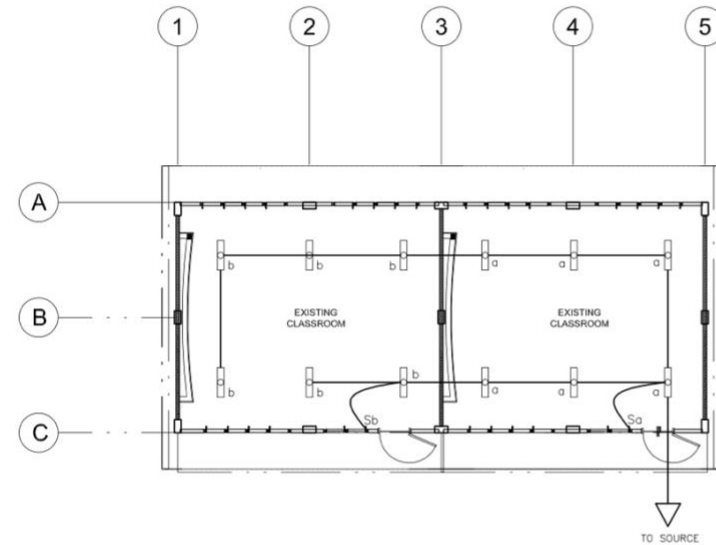


2 **TRUSS DETAIL (T-1)**
S-2 SCALE: 1:20M

<p>REPUBLIC OF THE PHILIPPINES DEPARTMENT OF EDUCATION EDUCATION FACILITIES DIVISION MERALCO AVENUE, PASIG CITY</p>	<p>DRAWN BY :</p> <p>JUNELSON P. CULLADO CAD OPERATOR EFD-DepEd</p>	<p>CHECKED BY :</p> <p>WILFREDO D. ALARCON STRUCTURAL ENGINEER EFD-DepEd</p>	<p>RECOMMENDING APPROVAL :</p> <p>LUIS E. PURISIMA, JR. ASST. CHIEF, EFD-AS DepEd</p>	<p>APPROVED BY :</p> <p>ANNABELLE R. PANGAN CHIEF, EFD-AS DepEd</p>	<p>PROJECT TITLE :</p> <p>DEPED SCHOOL BUILDING BLISS ELEMENTARY SCHOOL</p>	<p>PROJECT CODE :</p> <p>DSB - MPSS</p>	<p>OWNER :</p> <p>DEPARTMENT OF EDUCATION DepED</p>	<p>SHEET NO. :</p> <p>S-2 2</p>
	<p>SHEET CONTENTS :</p> <p>ROOF FRAMING PLAN, TRUSS DETAIL, PURLIN CONNECTION DETAILS</p>							

GENERAL NOTES

1. ALL ELECTRICAL WORKS SHALL COMPLY IN ACCORDANCE WITH THESE PLANS AND SPECIFICATIONS. THE APPLICABLE PROVISIONS OF THE LATEST EDITION OF THE PHILIPPINE ELECTRICAL CODE (PEC), THE RULES AND REGULATION OF THE LOCAL ENFORCING AUTHORITY AND THE REQUIREMENTS OF THE LOCAL POWER COMPANY. ALL ELECTRICAL WORKS SHALL BE UNDER THE IMMEDIATE SUPERVISION OF A DULY REGISTERED ELECTRICAL ENGINEER.
2. THE ELECTRICAL SERVICE POWER IS 1-PHASE, 2-WIRE, 230 V AC, 60 Hz.
3. WIRING METHOD SHALL BE AS FOLLOWS :
 - a. FEEDERS AND RISERS - RIGID METALLIC CONDUIT
 - b. LIGHTING, POWER RECEPTACLE - POLYVINYL CHLORIDE CONDUIT BRANCH CKT., & AUXILIARY SCH. 40
4. ALL WIRES SHALL BE COPPER AND THERMOPLASTIC INSULATED TYPE "THW" UNLESS OTHERWISE INDICATED IN THE PLAN. THE MINIMUM SIZE OF WIRE FOR POWER AND LIGHTING CIRCUIT HOMERUN SHALL BE 3.5mm² AND INSULATED FOR 600 VOLTS. SMALLEST RACEWAY SHALL BE 15mmø TRADE/NOMINAL SIZE.
5. ALL OUTLET BOXES SHALL BE GALVANIZED GAGE NO. 16 DEEP TYPE WITH FACTORY KNOCKOUTS.
6. ALL MATERIALS TO BE USED SHALL BE BRAND NEW AND APPROVED TYPE FOR THE PARTICULAR LOCATION AND PURPOSE.
7. GROUNDING SYSTEM SHALL BE PROVIDED TO ALL LIGHTING AND POWER CIRCUIT AS PER PHILIPPINE ELECTRICAL CODE REQUIREMENT.
8. MOUNTING HEIGHT OF WIRING DEVICES SHALL BE AS FOLLOWS :
 - a. LIGHT SWITCH - 1.20 M ABOVE FINISH FLOOR
 - b. CONVENIENCE OUTLET - 0.30 M ABOVE FINISH FLOOR.
 - c. SAFETY SWITCH - 1.80 M ABOVE FINISH FLOOR



1 LIGHTING LAYOUT
E-1 SCALE: 1:100m

LEGEND

SYMBOL	DESCRIPTION
◇	- CEILING LIGHT OUTLET
S/S _a	- ONE GANG DEVICE SWITCH
□	- FLOURESCENT

DRAWN BY :

Junelso P. Cullado
JUNELSON P. CULLADO
CAD OPERATOR
EFD-DepEd

CHECKED BY :

Felix P. Macarandan
FELIX P. MACARANDAN
PROFESSIONAL ELECTRICAL ENGINEER
EFD-DepEd

RECOMMENDING APPROVAL :

Luis G. Purisima, Jr.
LUIS G. PURISIMA, JR.
ASST. CHIEF, EFD-AS
DepEd

APPROVED BY :

Annabelle R. Pangan
ANNABELLE R. PANGAN
CHIEF, EFD-AS
DepEd

PROJECT TITLE :

DEPED SCHOOL BUILDING
BLISS ELEMENTARY SCHOOL

DATE PREPARED :

PROJECT CODE :

DSB - MPSS

OWNER :

DEPARTMENT OF EDUCATION
DepED

SHEET CONTENTS :

GEN. NOTES, LEGENDS,
LIGHTING LAYOUT

SHEET NO.:

E-1
1

PROGRAM OF WORKS

DETAILED COST ESTIMATE

PROJECT : PROPOSED REPAIR AND REHABILITATION OF THREE (3) - CLASSROOM SCHOOL BUILDING (RP - US)
 SCHOOL : LASIP GRANDE ELEMENTARY SCHOOL
 LOCATION : DAGUPAN CITY, PANGASINAN
 OWNER : DEPARTMENT OF EDUCATION
 CONTRACTOR:

ITEM NO.	DESCRIPTION	UNIT	QTY	UNIT COST		TOTAL COST		GRAND TOTAL
				MATERIAL	LABOR	MATERIAL	LABOR	
	GENERAL REQUIREMENTS							
	Mobilization/Temporary Structures, Utilities and Services/Demobilization	lot	1.00					
	Project Billboard	lot	1.00					
	Safety and Health	lot	1.00					
	Fire Safety Inspection Certificate (FSIC)	lot	1.00					
	Other Permit Fee	lot	1.00					
	Sub-total							
	BLDG #1: RP-US BLDG (3CL)							
1.0000	Earthworks							
	Elevate by 1.2m							
1.0400	Gravel Bedding G-1	cu.m	9.60					
1.0600	Soil Poisoning	sq m	206.40					
1.0500	Select Fill	cu.m	192.00					
	Sub-total							
2.0000	Concreting Works							
	Column	cu.m	1.03					
2.0200	Portland Cement	bag	10.00					
2.0500	Washed Sand	cu.m	1.25					
2.0300	Crushed Gravel 3/4"	cu.m	0.75					
	Beams	cu.m	4.32					
2.0200	Portland Cement	bag	39.00					
2.0500	Washed Sand	cu.m	4.50					
2.0300	Crushed Gravel 3/4"	cu.m	2.25					
	Slab on Grade	cu.m	19.20					
2.0200	Portland Cement	bag	173.00					
2.0500	Washed Sand	cu.m	19.25					
2.0300	Crushed Gravel 3/4"	cu.m	9.75					
	Ramp on Fill	cu.m	2.48					
2.0200	Portland Cement	bag	23.00					
2.0500	Washed Sand	cu.m	2.50					
2.0300	Crushed Gravel 3/4"	cu.m	1.25					
	Sub-total							
3.0000	Rebar Works							
	Column	kg	474.00					
	Beam	kg	629.00					
	Slab on Grade	kg	505.02					
	Ramp on Fill	kg	104.54					
3.0100	Deformed Round Bars, Grade 60	kg	1,712.56					
3.1200	G.I. Tie Wire	kg	35.00					
	Sub-total							
4.0000	Formworks							
	Column	sq.m	18.70					
4.0100	Coco Lumber	bd.ft	95.40					
4.0200	Plywood Ordinary, 1/4" x 4' x 8'	pc	4.00					
4.0400	CWN, Assorted	kg	2.00					
	Beams	sq.m	42.10					
4.0100	Coco Lumber	bd.ft	214.80					
4.0200	Plywood Ordinary, 1/4" x 4' x 8'	pc	8.00					
4.0400	CWN, Assorted	kg	4.00					
	Sub-total							
5.0000	Masonry Works							
	Masonry Wall	sq.m	131.55					
5.0200	CHB 6" thk	pc	1,645.00					
2.0200	Portland Cement	bag	66.00					
2.0500	Washed Sand	cu.m	6.00					
5.0400	10mm x 6m RSB	kg	175.00					
3.1200	G.I. Tie Wire	kg	4.00					
	Plastering	sq.m	263.10					
2.0200	Portland Cement	bag	87.00					
2.0500	Washed Sand	cu.m	9.00					
	Sub-total							
8.0000	Roofing Works							
8.0100	Removal of Roofing Sheets	sq m	192.00					
8.0200	Removal of Ridge Roll	pc	9.00					
8.0300	Removal of Flashing	pc	15.00					
8.0500	Removal of Fascia Board	pc	30.00					
	G.I. Long-Span Roofing, Corrugated, Pre-Painted, 1220mm x 0.5mm BMT	lm	247.50					
	G.I. Flashing, Preformed, Pre-Painted, 0.610m x 2.440m x 0.5mm BMT	pc	10.00					
	G.I. Ridge Roll, Preformed, Pre-Painted, 0.610m x 2.440m x 0.5mm BMT	pc	9.00					

ITEM NO.	DESCRIPTION	UNIT	QTY	UNIT COST		TOTAL COST		GRAND TOTAL
				MATERIAL	LABOR	MATERIAL	LABOR	
9.1430	Fascia Board, Fiber Cement 12" x 8'	pc	30.00					
7.1040	L 20 x 20 x 2mm	kg	133.50					
7.1020	L 38 x 38 x 4.5mm	kg	99.00					
	3" Flat head Countersunk screw	pc	510.00					
8.0900	J-Bolt (6mm dia.)	pc	1,512.00					
	Teckscrew 2-3/4"	pc	1,980.00					
8.1300	Roof Sealant	L	2.00					
	Sub-total							
7.0000	Steel works							
	<i>Trusses and Members</i>							
9.0070	Removal of Wooden Truss/ Beams	bd.ft	1,236.00					
9.0080	Removal of Purlins	bd.ft	832.50					
7.0900	L 50 x 50 x 6mm	kg	1,720.50					
7.0200	2" x 4" x 1.5mm C - purlins	kg	1,375.50					
7.1010	L 50 x 50 x 2mm	kg	33.00					
7.1810	Machine Bolts (10 mm dia.)	pc	390.00					
7.2200	12mmØ Sag Rods with Standard Nuts and Washers	pc	144.00					
7.1900	Plain Round Bar 16mmØ x 6m	pc	25.50					
7.2000	Turn Buckle 16 mmØ	pc	24.00					
	Anchor Bolt with Nuts and Washer, 12mmØ x 50mm x 300mm	pc	60.00					
7.1100	Steel Plate 1.20m x 2.40m x 6mm thk	pc	2.25					
7.1200	Steel Plate 1.20m x 2.40m x 10mm thk	pc	0.75					
7.3600	Welding Rod	kg	69.00					
13.1100	Primer, Zinc Chromate	gal	7.50					
	Sub-total							
9.0000	Carpentry works							
	Interior Ceiling		144.00					
9.0100	Removal of Ceiling	sq.m	144.00					
9.0500	Plywood, Marine 1/4" x 4' x 8'	pc	51.00					
	50 mm x 50 mm Ceiling Joist	bd.ft	288.73					
	50 mm x 75 mm Ceiling Joist	bd.ft	442.94					
9.1700	Rough Lumber, Sun Dried, Tanguile	bd.ft	731.66					
9.2100	Finishing Nails	kg	3.00					
4.0400	CWN, Assorted	kg	13.50					
9.2200	Concrete Nails	kg	3.00					
9.1900	Wood Preservative, Brown	L	4.00					
9.2100	Finishing Nails	kg	2.00					
4.0400	CWN, Assorted	kg	7.00					
9.2200	Concrete Nails	kg	2.00					
9.1900	Wood Preservative, Brown	L	3.00					
	<i>Blackboards</i>							
9.1800	S4S Lumber, Kiln Dried, Tanguile	bd.ft	111.00					
9.2000	Lawanit, 1/4" thk	pc	6.00					
9.2100	Finishing Nails	kg	2.00					
4.0400	CWN, Assorted	kg	3.00					
9.2200	Concrete Nails	kg	2.00					
	Sub-total							
10.0000	Electrical Works							
	<i>Roughing-ins</i>							
10.0100	Electrical Conduit uPVC, 15mmØ	pc	36.00					
10.0490	RSC 20mmØ	pc	1.00					
10.0800	Entrance Cap 20mm dia.	pc	1.00					
10.1200	Junction Box, 4" x 4" G.I.	pc	12.00					
10.1300	Utility Box, 2" x 4" G.I.	pc	6.00					
	<i>Wires & Fixtures</i>							
10.1600	3.5 mm² THHN Wire, Stranded	m	330.00					
10.2700	Duplex Convenience Outlet, Grounding Type, 20A, 250V	set	6.00					
10.3200	3 Single Pole Wall Switches in One Switch Plate (10 AMP, 230V)	set	3.00					
10.3610	FL 1 x 40W Industrial Type	set	15.00					
10.5600	Fire Extinguisher 10 lbs	pc	1.00					
10.3310	Safety Switch 30A 2P	set	2.00					
10.5500	Electrical Tape	pc	3.00					
10.5400	Wall Fan, 60W, 230V, 60Hz	set	6.00					
10.5600	Ceiling Fan, 60W, 230V, 60Hz	set	3.00					
	Sub-total							
6.0000	Doors and Windows							
6.0100	Removal of Door with Jamb	set	3.00					
6.0200	Removal of Window with Jamb	sq.m	33.00					
6.0600	Door Jamb	bd.ft	66.00					
6.0330	D-2, (0.90m x 2.10m) Panel Door	set	6.00					
6.0410	D-3, (0.70m x 2.10m) Flush Door	set	3.00					
6.2000	Hinges, Standard 3-1/2" x 3-1/2"	pa	12.00					
6.1900	Entrance, Lever Lockset	set	6.00					
6.0700	Window Jamb	bd.ft	268.00					
6.1009	Jalousie Window with Clear Glass Blades on Jalousie Type Silver Colored Frame with Grilles	sq.ft	380.00					
	Sub-total							
11.0000	Plumbing Works							
11.0210	Water Closet, Manual Flush Type	set	3.00					
11.0400	Concrete Counter Sink Type, with Lever Type Faucet and Complete Accessories	set	3.00					
11.0500	Faucet, Hose Bibb, Brass 1/2"Ø	pc	3.00					

ITEM NO.	DESCRIPTION	UNIT	QTY	UNIT COST		TOTAL COST		GRAND TOTAL
				MATERIAL	LABOR	MATERIAL	LABOR	
11.0100	Water Closet Flange	set	3.00					
11.4300	Tissue Holder	pc	3.00					
11.1000	PP-R Pipe 3/4"Ø x 4.0m	pc	12.00					
11.1500	PP-R Coupling, 3/4"Ø	pc	12.00					
11.2100	PP-R Elbow 90o x 3/4"Ø	pc	1.00					
11.1700	PP-R Coupling Reducer, 1/2" x 3/4"Ø	pc	1.00					
11.1100	PP-R Pipe 1/2"Ø x 4.0m	pc	12.00					
11.2200	PP-R Elbow 90o x 1/2"Ø	pc	18.00					
11.1600	PP-R Coupling, 1/2"Ø	pc	8.00					
11.2700	PP-R Tee, 1/2"Ø	pc	16.00					
11.3800	Gate Valve, 3/4"Ø	pc	1.00					
11.4410	S.S.Floor Drain 4' x 4"	pc	3.00					
11.4500	Mirror	pc	3.00					
	Sub-total							
12.0000	Sanitary Works							
12.0111	Three Chamber Septic Vault (2.40m x 1.50m x 1.80m)	unit	1.00					
	Sub-total							
13.0000	Painting Works							
	Concrete surfaces	sq.m	397.50					
13.0100	Neutralizer	gal	21.00					
13.0200	Latex, Flat	gal	40.50					
13.0300	Masonry Putty	gal	16.50					
13.0400	Latex, Semi Gloss	gal	15.00					
13.0500	Acri Color	qrt	9.00					
	Interior Ceiling	sq.m	144.00					
13.0600	Enamel, Flatwall	gal	8.00					
13.0800	Enamel, Semi Gloss	gal	8.00					
13.0700	Glazing Putty	gal	8.00					
13.0900	Paint Thinner	gal	4.00					
	Doors and Windows Jambes	sq.m	55.50					
13.0600	Enamel, Flatwall	gal	3.00					
13.0700	Glazing Putty	gal	3.00					
13.0800	Enamel, Semi Gloss	gal	6.00					
13.0900	Paint Thinner	gal	3.00					
	Sub-total							
14.0000	Tile Works							
	Flooring	sq.m	174.75					
14.0110	Unglazed Floor Tiles 20cm x 20cm (CR)	pc	174.00					
14.0120	Unglazed Floor Tiles 60cm x 60cm	pc	481.00					
14.0300	Tile Adhesive 25 kg/bag	bag	32.00					
14.0500	Tile Grout 5 kg/bag	bag	14.00					
	Sub-total							
	Ramp on Fill (with Ramp Railing)	cu.m	0.54					
2.0200	Portland Cement	bag	5.00					
2.0400	Crushed Gravel 1"	cu.m	0.75					
2.0500	Washed Sand	cu.m	0.50					
5.0400	10mm x 6m RSB	kg	23.28					
3.1200	G.I. Tie Wire	kg	1.00					
7.2610	G.I. Pipe 1-½"Ø Sch. 40	pc	6.00					
7.3600	Welding Rod	kg	3.00					
	Sub-total							
I.	DIRECT COST							
II.	INDIRECT COST (I - Gen. Req.)							
III.	TAX 5% of (I + II)							
IV.	TOTAL CONSTRUCTION COST (I + II + III)							

Prepared by:

Contractor's Representative



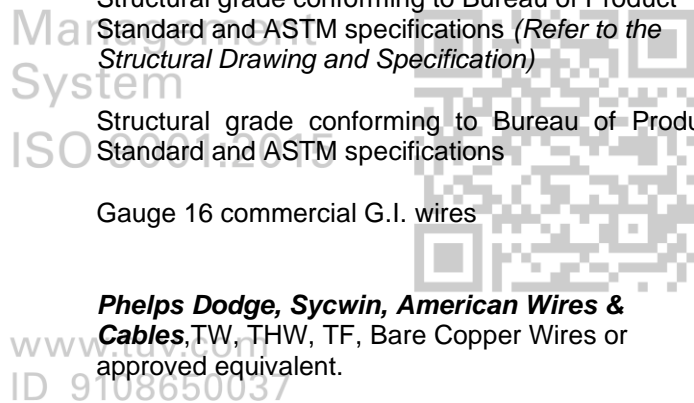
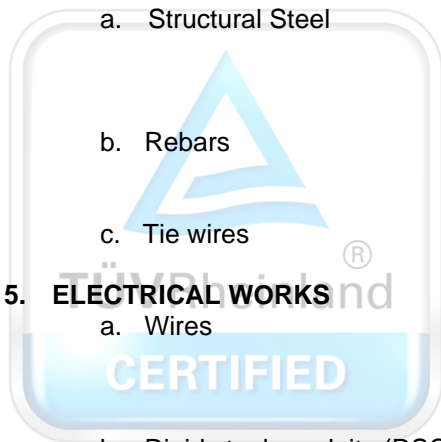
DIGEST SPECIFICATION

PROJECT: REPAIR AND REHABILITATION OF SCHOOL BUILDINGS –
3 CLASSROOMS
NAME OF SCHOOL: BLISS ELEMENTARY SCHOOL

1. **ROOFING WORKS**

Corrugated-type Pre-painted Longspan Sheets and Pre-painted Bended Accessories, Gauge 26 by **DN Steel, Puyat Steel** or **Philmetal** or approved equivalent.
2. **CONCRETE WORKS**
 - a. Portland Cement **Holcim, Northern, Republic** or any equivalent equal
3. **MASONRY WORKS**

4"X8"X16" or 6"X8"X16" Non-load Bearing CHB
4. **STEEL BARS & METALS**
 - a. Structural Steel
Structural grade conforming to Bureau of Product Standard and ASTM specifications (*Refer to the Structural Drawing and Specification*)
 - b. Rebars
Structural grade conforming to Bureau of Product Standard and ASTM specifications
 - c. Tie wires
Gauge 16 commercial G.I. wires
5. **ELECTRICAL WORKS**
 - a. Wires
Phelps Dodge, Sycwin, American Wires & Cables, TW, THW, TF, Bare Copper Wires or approved equivalent.
 - b. Rigid steel conduits (RSC) **Matsushita, Wheatland** or approved equivalent.
 - c. PVC Conduits **Crown, Neltex, Emerald, Moldex** for PVC or approved equivalent.
 - d. Switches **BTicino, National** for 1-Gang, 2-Gang, 3-Gang Device or approved equivalent.
 - e. Convenience Outlet **BTicino, National** for, Duplex, Special Purpose with ground or approved equivalent.
 - f. Fluorescent Lamps **Firefly, Akari, Philips, G.E.**, Industrial Type Fixture with 1-40 Watts, 2-40 Watts or approved equivalent.
 - g. Incandescent Bulb **Firefly, Akari, Philips, G.E.**, 25 Watts-100 Watts or approved equivalent.
 - h. Ballast **Firefly, Akari, Philips, G.E.**, 230V, high power factor, Rapid start or approved equivalent.





Republic of the Philippines
DEPARTMENT OF EDUCATION
Region I
SCHOOLS DIVISION OFFICE
DAGUPAN CITY



- i. Circuit Breakers **Koten, Fuji, Mitsubishi** Bolt-on Type with molded case or approved equivalent.
- j. Junction Box 4 x 4 PVC by **Crown, Poly** or approved equivalent
- k. Utility Box 2 x 4 PVC by **Crown, Poly** or approved equivalent
- l. Panel Box **Koten** or approved equivalent

6. DOORS, WINDOWS & ACCESSORIES

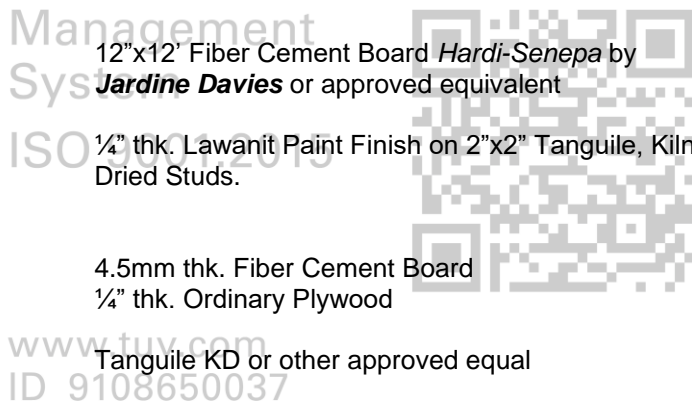
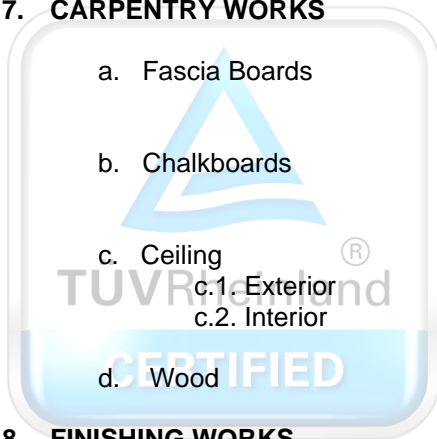
- a. Flush Doors / Hollow core (1 ¾" thk) with one face marine for toilet Doors
Tanguile Kiln Dried (1 ¾" thk)
- b. Door Jambs 2" x 6" Tanguile/Guijo
- c. Windows Clear Glass panel blades in aluminum jalousie with transom (satin-finish) on 2" x 6" Tanguile/Guijo sill.

7. CARPENTRY WORKS

- a. Fascia Boards 12"x12' Fiber Cement Board **Hardi-Senepa** by **Jardine Davies** or approved equivalent
- b. Chalkboards ¼" thk. Lawanit Paint Finish on 2"x2" Tanguile, Kiln Dried Studs.
- c. Ceiling
c.1. Exterior 4.5mm thk. Fiber Cement Board
c.2. Interior ¼" thk. Ordinary Plywood
- d. Wood Tanguile KD or other approved equal

8. FINISHING WORKS

- a. Paints **Davies** from Charter Philippines for Quick-Dry, Latex, Red Lead Primer and Enamel Paints (*refer to approved Color Scheme*)





1
A-1 PERSPECTIVE VIEW
SCALE: NTS

TABLE OF CONTENTS

REPUBLIC OF THE PHILIPPINES
OFFICE OF THE CITY/MUNICIPAL
ENGINEER/BUILDING OFFICIAL

DISTRICT/CITY/MUNICIPALITY

ARCHITECTURAL

- A-1 PERSPECTIVE VIEW, TABLE OF CONTENTS
- A-2 FLOOR PLAN, ELEVATIONS, RAMP DETAILS
- A-3 CROSS SECTION, LONGITUDINAL SECTION, ROOF PLAN, REFLECTED CEILING PLAN, VENT DETAIL
- A-4 SCHEDULE OF DOORS AND WINDOWS, GRILLE DETAIL, DETAILED CROSS SECTION

STRUCTURAL

- S-1 FOUNDATION PLAN, ROOF BEAM PLAN, FOOTING DETAIL, SCHEDULE OF COLUMN AND BEAM
- S-2 ROOF FRAMING PLAN, TRUSS DETAIL, PURLIN CONNECTION DETAILS

ELECTRICAL

- E-1 GEN. NOTES, LEGENDS, LIGHTING LAYOUT

SANITARY

OTHERS

LAND USE & ZONING

LINE & GRADE

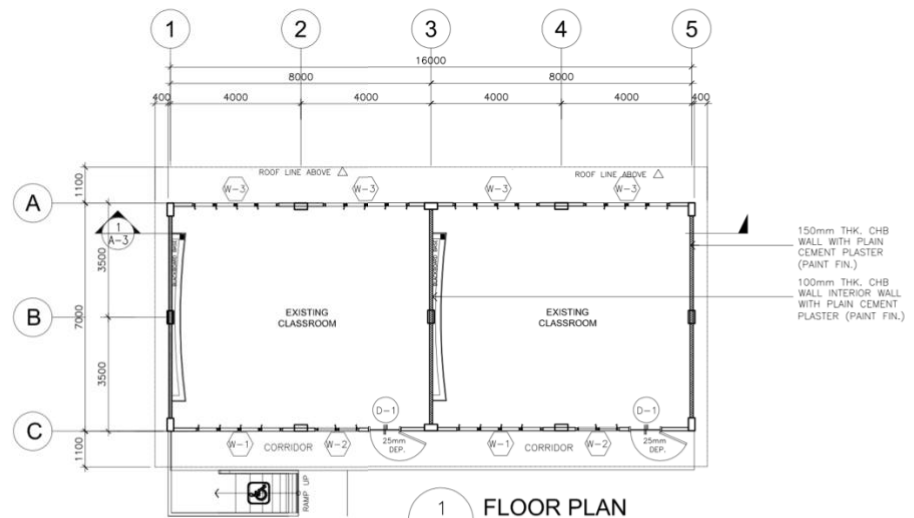
ARCHITECTURAL

STRUCTURAL

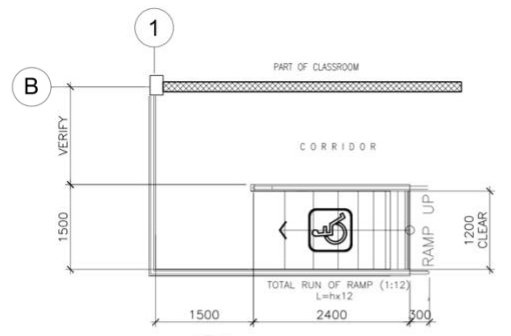
SANITARY

ELECTRICAL

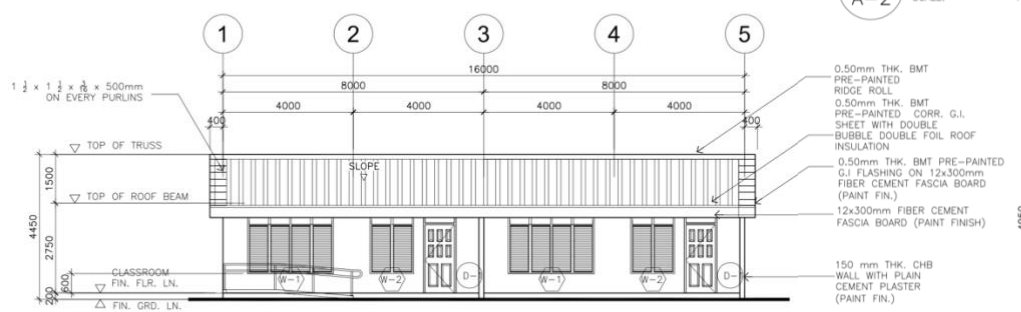
MECHANICAL



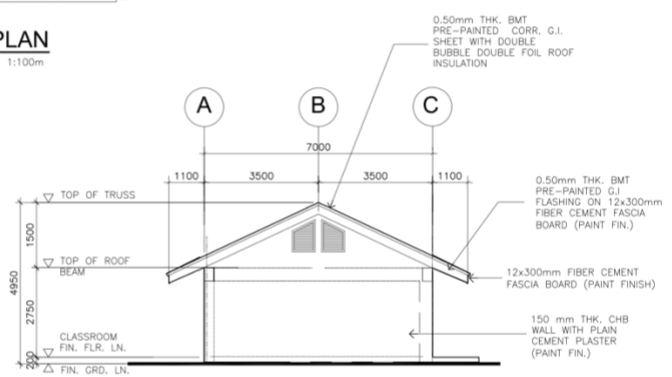
1 FLOOR PLAN
A-2 SCALE: 1:100m



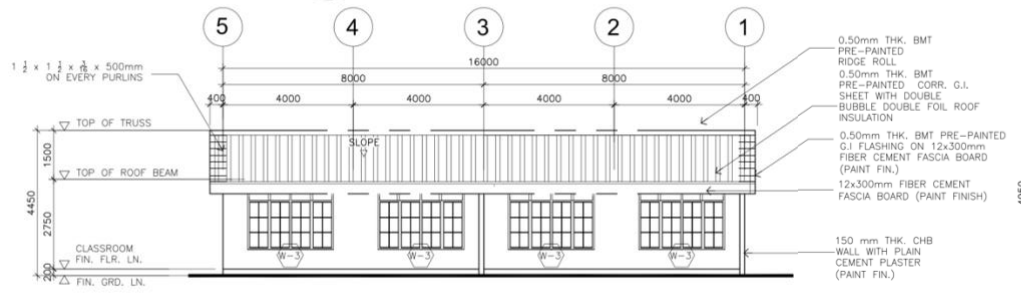
6 RAMP DETAIL
A-2



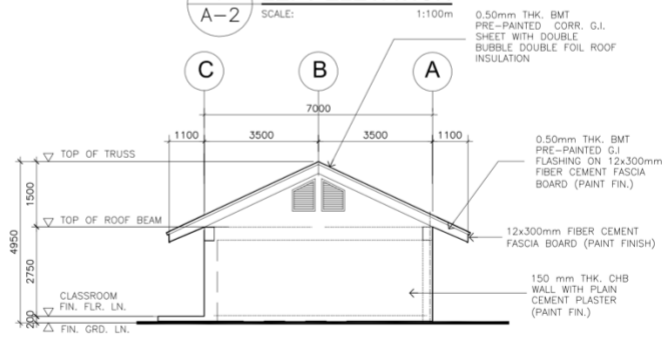
2 FRONT SIDE ELEVATION
A-2 SCALE: 1:100M



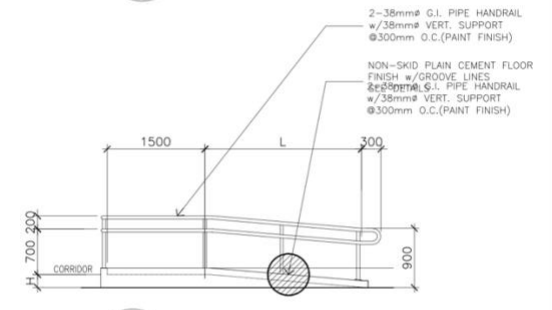
5 LEFT ELEVATION
A-2 SCALE: 1:100m



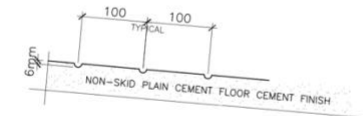
3 REAR SIDE ELEVATION
A-2 SCALE: 1:100M



4 RIGHT SIDE ELEVATION
A-2 SCALE: 1:100M



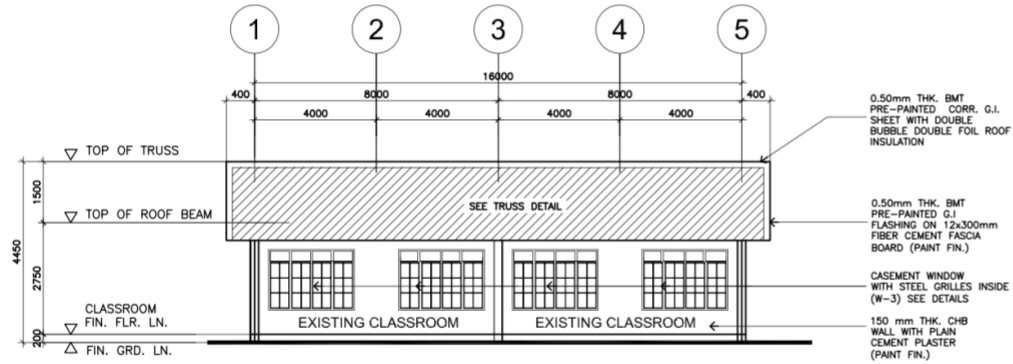
7 RAMP SECTION
A-2 SCALE: 1:100M



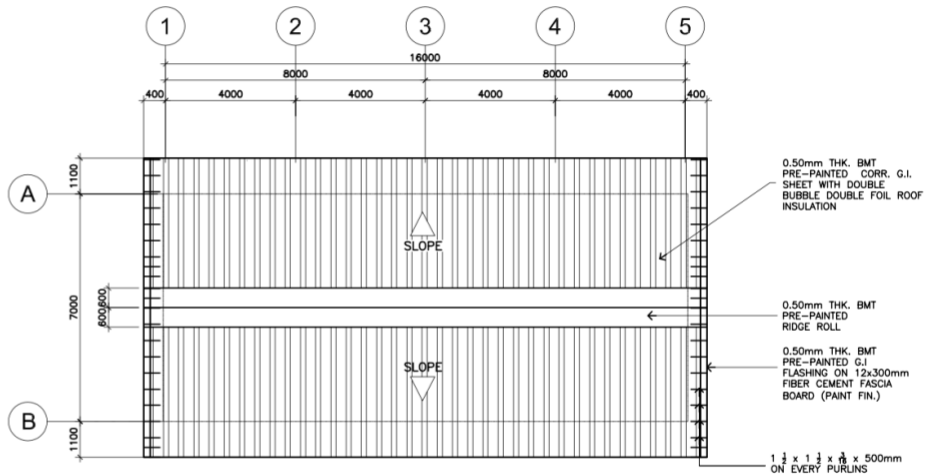
8 SPOT DETAIL
A-2 SCALE

NOTE:
IF THERE WILL BE CHANGE IN THE HEIGHT (h) OF THE FINISH FLOOR LINE (FFL) OF THE BUILDING, THE LENGTH OF THE RAMP SHALL BE COMPUTED AS (L=h x 12)

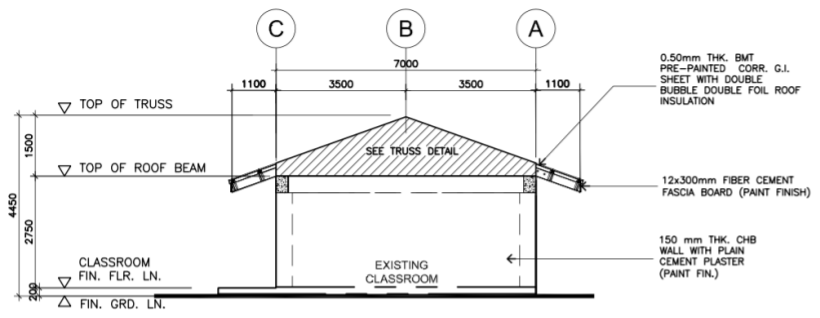
<p>REPUBLIC OF THE PHILIPPINES DEPARTMENT OF EDUCATION EDUCATION FACILITIES DIVISION MERALCO AVENUE, PASIG CITY</p>	<p>DRAWN BY: <i>Junelso P. Cullado</i> JUNELSON P. CULLADO CAD OPERATOR EFD-DepEd</p>	<p>CHECKED BY: <i>Jet Raymond G. Alabaso</i> JET RAYMOND G. ALABASO ARCHITECT III EFD-DepEd</p>	<p>RECOMMENDING APPROVAL: <i>Luis E. Purisima, Jr.</i> LUIS E. PURISIMA, JR. ASST. CHIEF, EFD-AS DepEd</p>	<p>APPROVED BY: <i>Annabelle R. Pangan</i> ANNABELLE R. PANGAN CHIEF, EFD-AS DepEd</p>	<p>PROJECT TITLE: DEPED SCHOOL BUILDING LASIP GRANDE ELEMENTARY SCHOOL</p>	<p>PROJECT CODE: DSB - MPSS</p>	<p>OWNER: DEPARTMENT OF EDUCATION DepED</p>	<p>SHEET NO: A-2 4</p>
	<p>SHEET CONTENTS: FLOOR PLAN, ELEVATIONS, RAMP DETAILS</p>		<p>DATE PREPARED: LOCATION:</p>					



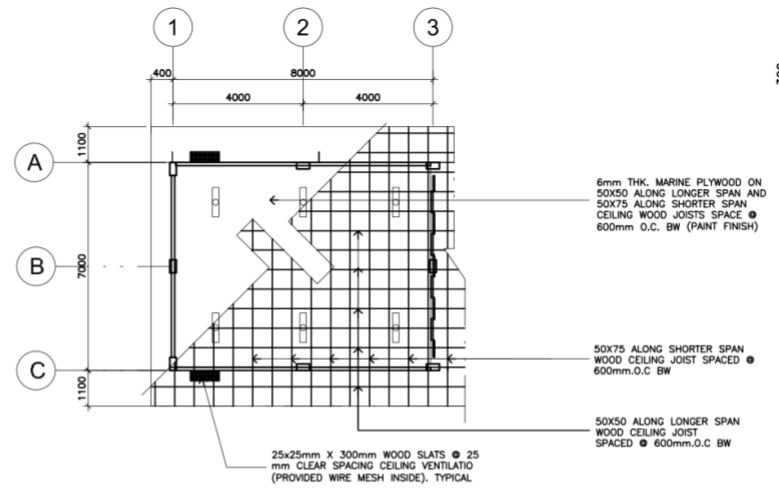
1 LONGITUDINAL SECTION
 A-3 SCALE : NTS



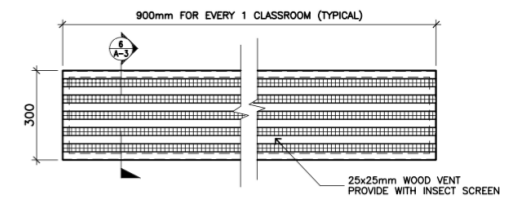
3 ROOF PLAN
 A-3 SCALE : 1:100M



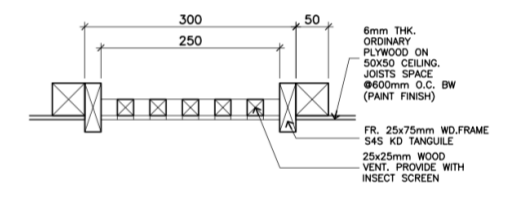
2 CROSS SECTION
 A-3 SCALE : 1:80M



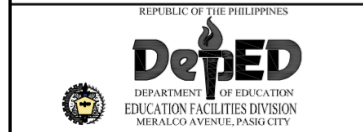
4 REFLECTED CEILING PLAN
 A-3 SCALE: 1:100m



5 TYP. CLG. VENT PLAN DETAIL
 A-3 SCALE 1:10M



6 TYP. CLG. VENT SECTION DETAIL
 A-3 SCALE 1:10M



DRAWN BY :
 JUNELSON P. CULLADO
 CAD OPERATOR
 EFD-DepEd

CHECKED BY :
 JET RAYMOND G. ALABASO
 ARCHITECT III
 EFD-DepEd

RECOMMENDING APPROVAL :
 LUIS S. PURISIMA, JR.
 ASST. CHIEF, EFD-AS
 DepEd

APPROVED BY :
 ANNABELLE R. PANGAN
 CHIEF, EFD-AS
 DepEd

PROJECT TITLE :
 DEPED SCHOOL BUILDING
 LASIP GRANDE ELEMENTARY SCHOOL

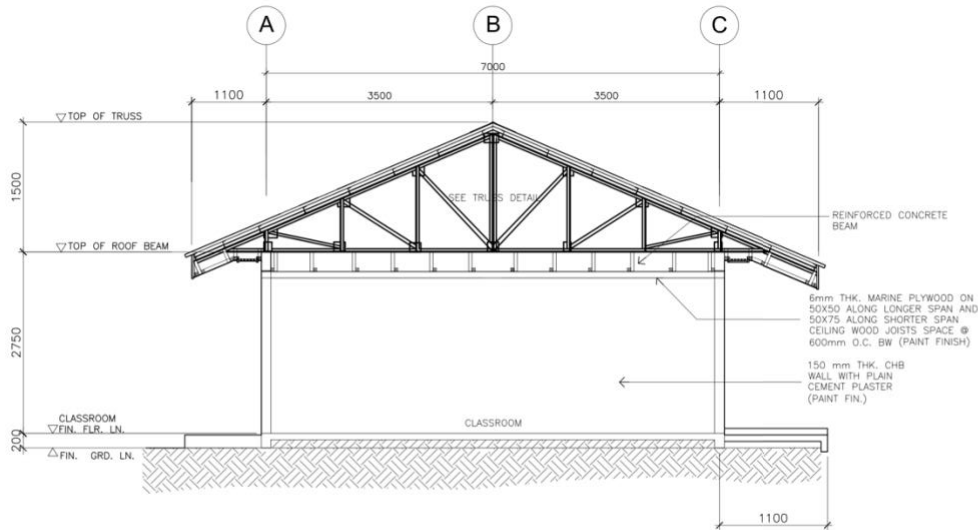
DATE PREPARED :

PROJECT CODE:
 DSB - MPSS

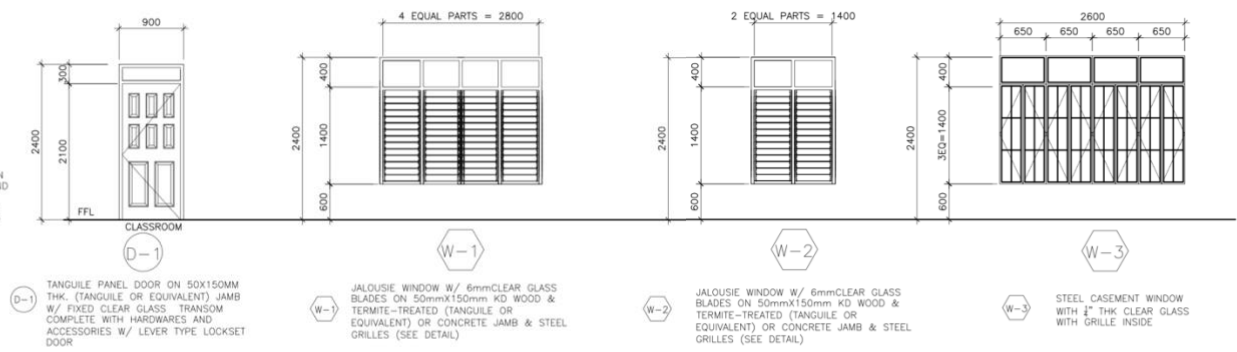
OWNER :
 DEPARTMENT OF EDUCATION
 DepED

SHEET CONTENTS :
 CROSS SECTION, LONGITUDINAL SECTION, ROOF PLAN, REFLECTED CEILING PLAN, VENT DETAIL

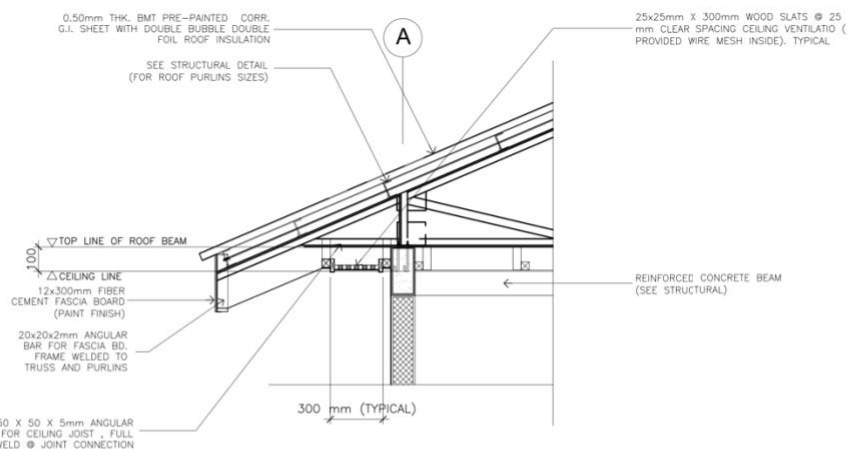
SHEET NO.:
 A-3
 4



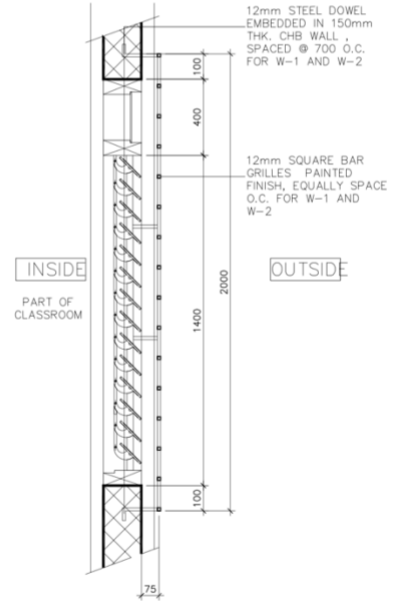
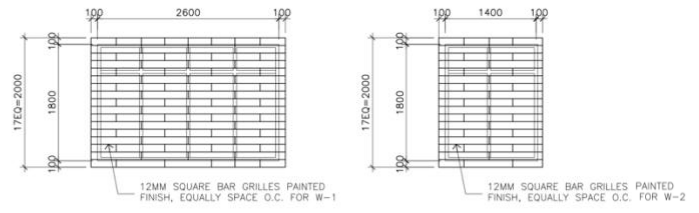
1 DETAILED CROSS SECTION
 A-4 SCALE: 1:50M



3 DOOR & WINDOW SCHEDULES
 A-4 SCALE: 1:50M

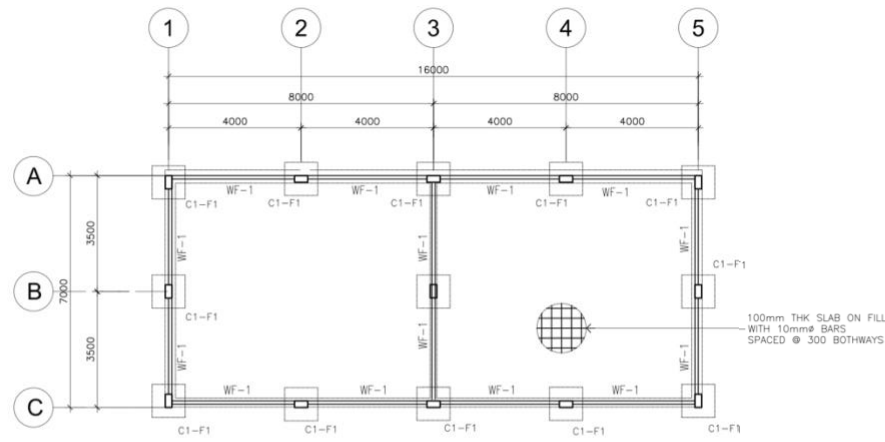


2 TYPICAL DETAIL SECTION OF EAVE (FRONT)
 A-4 SCALE: 1:20M

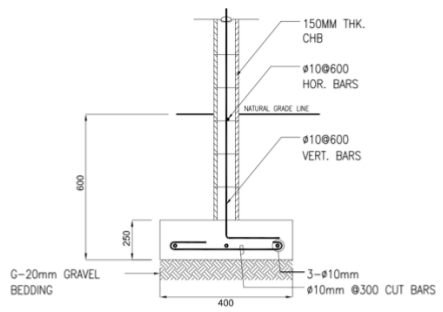


5 GRILLES DETAIL
 A-4 SCALE: NTS

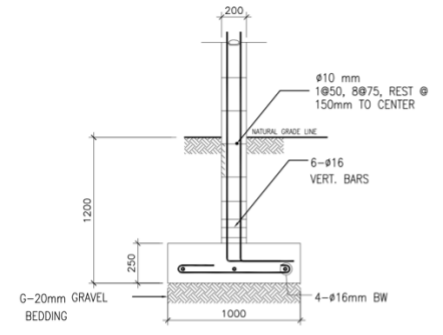
<p>REPUBLIC OF THE PHILIPPINES DepED DEPARTMENT OF EDUCATION EDUCATION FACILITIES DIVISION MERALCO AVENUE, PASIG CITY</p>	DRAWN BY: JUNELSON P. CULLADO CAD OPERATOR EFD-DepEd	CHECKED BY: JET RAYMOND G. ALABASO ARCHITECT III EFD-DepEd	RECOMMENDING APPROVAL: LUIS G. PURISIMA, JR. ASST. CHIEF, EFD-AS DepEd	APPROVED BY: ANNABELLE R. PANGAN CHIEF, EFD-AS DepEd	PROJECT TITLE: DEPED SCHOOL BUILDING LASIP GRANDE ELEMENTARY SCHOOL	PROJECT CODE: DSB - MPSS	OWNER: DEPARTMENT OF EDUCATION DepED	SHEET NO.: A-4 4
	SHEET CONTENTS: SCHEDULE OF DOORS AND WINDOWS, GRILLE DETAIL, DETAILED CROSS SECTION							



1 FOUNDATION PLAN
S-1 SCALE: 1:100M

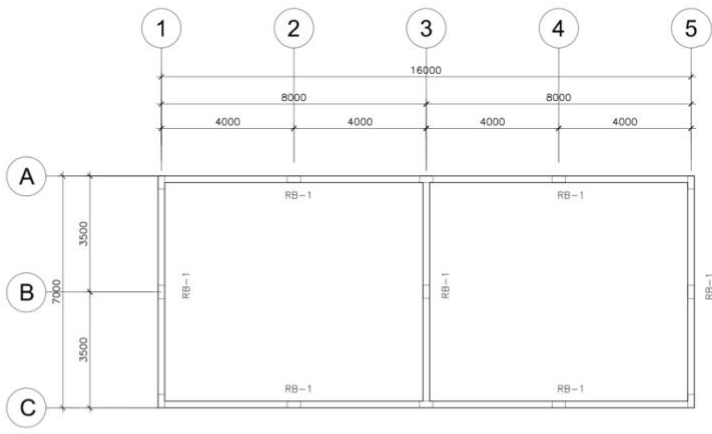


3 DETAIL OF WF-1
S-1 SCALE: NTS.

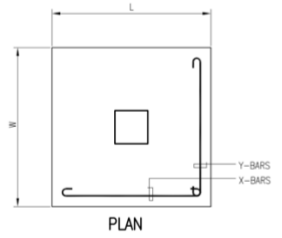
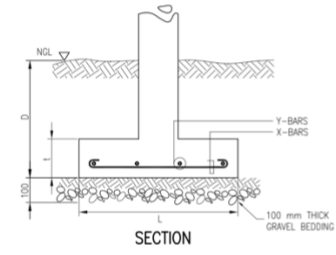


4 DETAIL OF C1-F1
S-1 SCALE: NTS.

SCHEDULE OF COLUMN AND BEAM		
LEVEL	C-1	RB-1
FOUNDATION LEVEL TO ROOF LEVEL	<p>MAIN BAR: 6-16mm TIES: 10mm diameter, 1850, 8@75, REST @ 150mm TO CENTER</p>	<p>MAIN BAR: 4-16mm TIES: 10mm diameter, 1850, 8@75, REST @ 150mm TO CENTER</p>



2 ROOF BEAM PLAN
S-1 SCALE: 1:100M



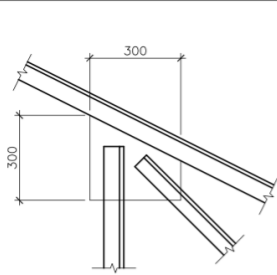
5 TYP. FOOTING DETAIL
S-1 SCALE: NTS.

SCHEDULE OF FOOTINGS							
FOOTING MARK	FOOTING DIMENSIONS (mm)				REINFORCEMENT		REMARKS
	LENGTH (L)	WIDTH (W)	DEPTH (D)	THICKNESS (t)	BAR X	BAR Y	
F-1	1000	1000	1200	250	4 - 16mm#	4 - 16mm#	SQUARE FOOTING

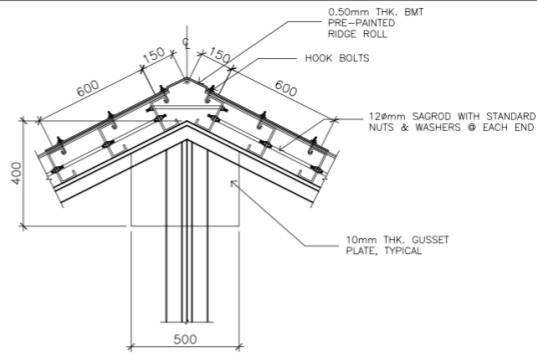
DESIGN CRITERIA :

- A. CONCRETE
 $f_c' = 20.685 \text{ Mpa (3,000 Psi)}$, minimum compressive strength of concrete a 28 days unless otherwise specified.
- B. REBAR
 $f_y = 275.8 \text{ Mpa (40,000 Psi)}$, minimum yield strength of reinforcing bars unless otherwise specified.
- C. STRUCTURAL STEEL
 $F_y = 248 \text{ Mpa (36 Ksi)}$, specified minimum yield strength unless otherwise specified.
- D. FOUNDATION
 $SBP = 95.706 \text{ Kpa (2,000 Psf)}$, was used in the design for all footings. No footing shall rest on fill.

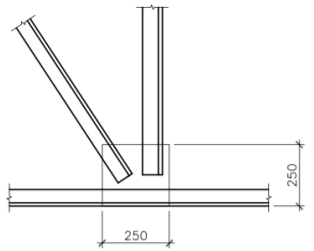
<p>DEPARTMENT OF EDUCATION BUREAU OF TECHNICAL EDUCATION FACULTY TRAINING DIVISION MORONG AVENUE, PASIG CITY</p>	DRAWN BY : JUNELSON P. CULLADO CAD OPERATOR EFD-DepEd	CHECKED BY : WILFREDO D. ALARCON STRUCTURAL ENGINEER EFD-DepEd	RECOMMENDING APPROVAL : LUIS G. PURISIMA, JR. ASST. CHIEF, EFD-AS DepEd	APPROVED BY : ANNABELLE R. PANGAN CHIEF, EFD-AS DepEd	PROJECT TITLE : DEPED SCHOOL BUILDING LASIP GRANDE ELEMENTARY SCHOOL DATE PREPARED :	PROJECT CODE : DSB - MPSS	OWNER : DEPARTMENT OF EDUCATION DepED SHEET CONTENTS : FOUNDATION PLAN, ROOF BEAM PLAN, FOOTING DETAIL, SCHEDULE OF COLUMN AND BEAM	SHEET NO : <div style="border: 1px solid black; border-radius: 50%; width: 40px; height: 40px; display: flex; align-items: center; justify-content: center; margin: 0 auto;"> <div style="text-align: center;"> <p>S-1</p> <p>2</p> </div> </div>
--	--	---	--	--	---	------------------------------	---	--



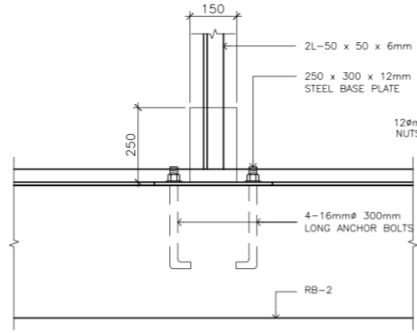
3 **DETAIL - 2**
S-2 SCALE: 1:10M



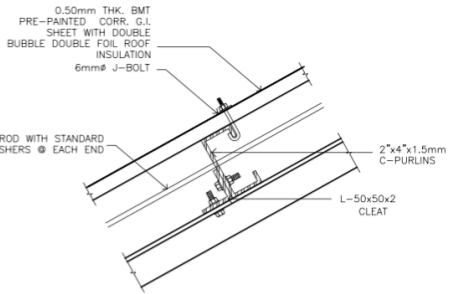
4 **RIDGE ROLL CONNECTION DETAIL**
S-2 SCALE: NTS



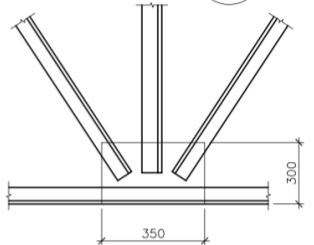
6 **DETAIL - 4**
S-2 SCALE: 1:10M



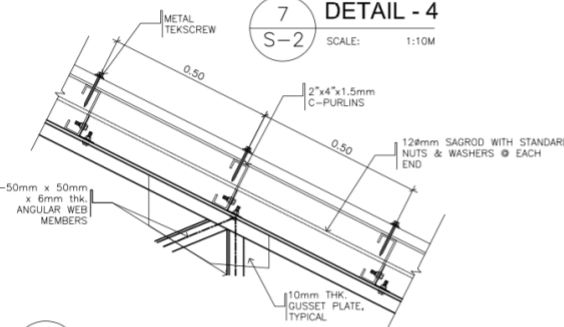
7 **DETAIL - 4**
S-2 SCALE: 1:10M



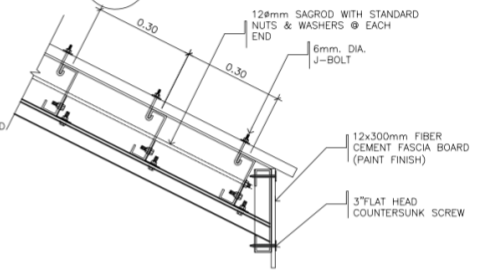
8 **CONNECTIO OF G.I SHEET ROOFING TO PURLIN**
S-2 SCALE: 1:5M



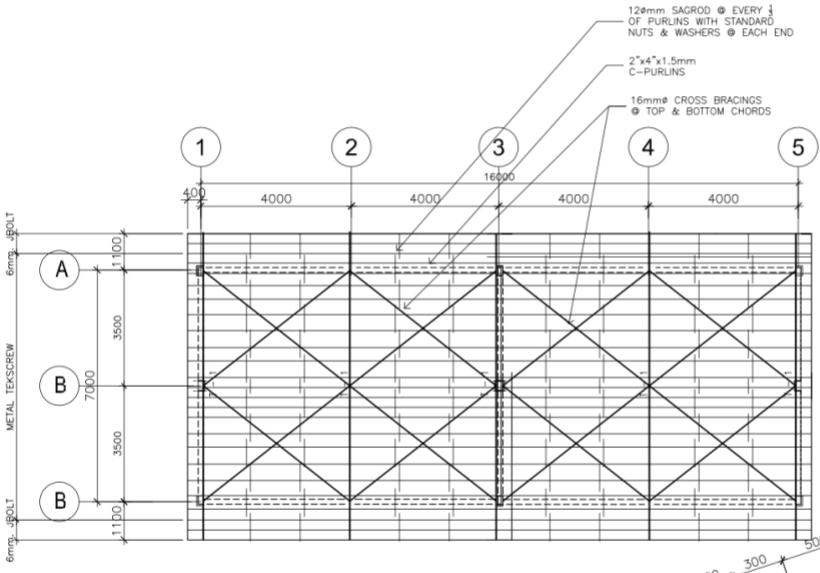
5 **DETAIL - 4**
S-2 SCALE: 1:10M



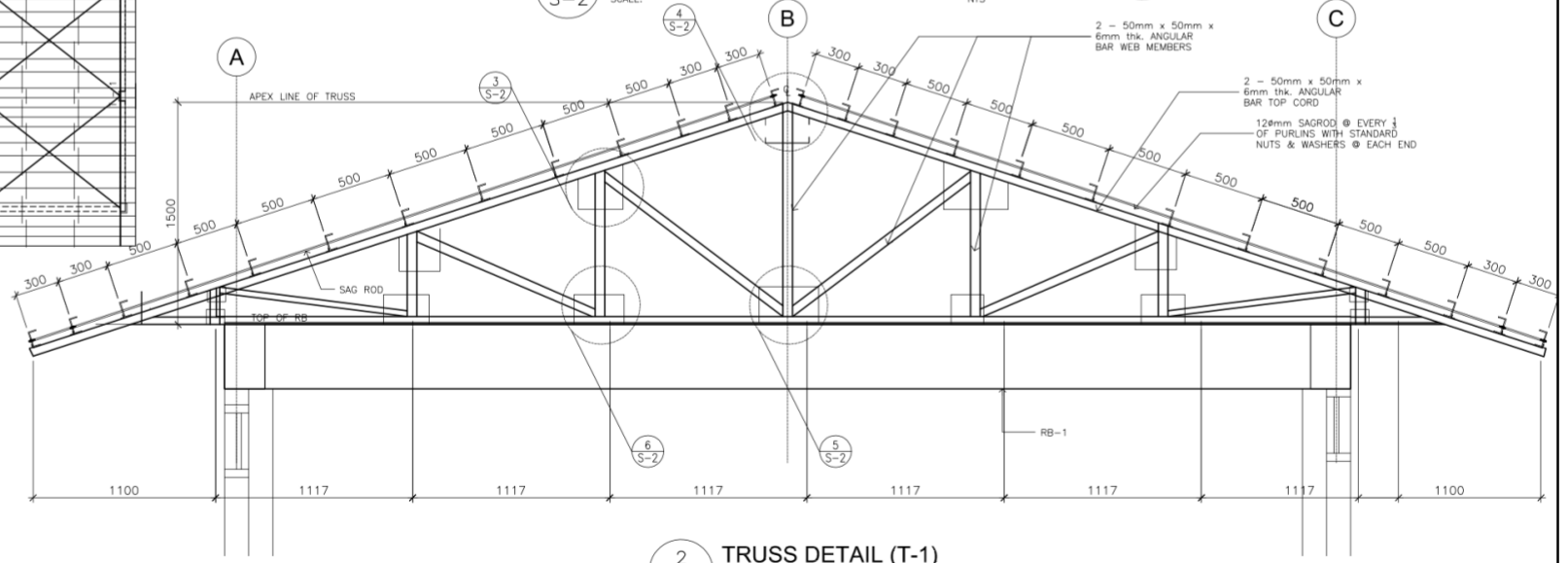
10 **WEB MEMBERS CONNECTION DET.**
S-2 SCALE: NTS



9 **FASCIA BOARD CONNECTION DET**
S-2 SCALE: NTS



1 **ROOF FRAMING PLAN**
S-2 SCALE: 1:100M

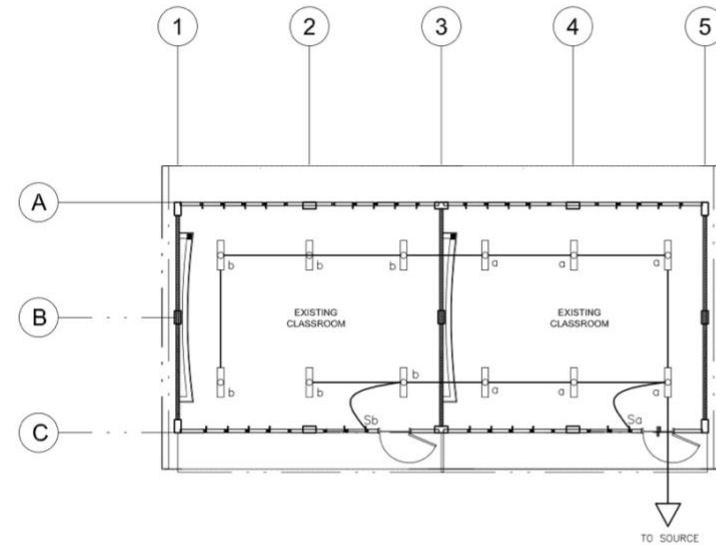


2 **TRUSS DETAIL (T-1)**
S-2 SCALE: 1:20M

<p>REPUBLIC OF THE PHILIPPINES DEPARTMENT OF EDUCATION EDUCATION FACILITIES DIVISION MERALCO AVENUE, PASIG CITY</p>	<p>DRAWN BY :</p> <p>JUNELSON P. CULLADO CAD OPERATOR EFD-DepEd</p>	<p>CHECKED BY :</p> <p>WILFREDO D. ALARCON STRUCTURAL ENGINEER EFD-DepEd</p>	<p>RECOMMENDING APPROVAL :</p> <p>LUIS E. PURISIMA, JR. ASST. CHIEF, EFD-AS DepEd</p>	<p>APPROVED BY :</p> <p>ANNABELLE R. PANGAN CHIEF, EFD-AS DepEd</p>	<p>PROJECT TITLE :</p> <p>DEPED SCHOOL BUILDING LASIP GRANDE ELEMENTARY SCHOOL</p>	<p>PROJECT CODE :</p> <p>DSB - MPSS</p>	<p>OWNER :</p> <p>DEPARTMENT OF EDUCATION DepED</p>	<p>SHEET NO. :</p> <p>S-2 2</p>
	<p>DATE PREPARED :</p>							<p>SHEET CONTENTS :</p> <p>ROOF FRAMING PLAN, TRUSS DETAIL, PURLIN CONNECTION DETAILS</p>

GENERAL NOTES

1. ALL ELECTRICAL WORKS SHALL COMPLY IN ACCORDANCE WITH THESE PLANS AND SPECIFICATIONS. THE APPLICABLE PROVISIONS OF THE LATEST EDITION OF THE PHILIPPINE ELECTRICAL CODE (PEC), THE RULES AND REGULATION OF THE LOCAL ENFORCING AUTHORITY AND THE REQUIREMENTS OF THE LOCAL POWER COMPANY. ALL ELECTRICAL WORKS SHALL BE UNDER THE IMMEDIATE SUPERVISION OF A DULY REGISTERED ELECTRICAL ENGINEER.
2. THE ELECTRICAL SERVICE POWER IS 1-PHASE, 2-WIRE, 230 V AC, 60 Hz.
3. WIRING METHOD SHALL BE AS FOLLOWS :
 - a. FEEDERS AND RISERS - RIGID METALLIC CONDUIT
 - b. LIGHTING, POWER RECEPTACLE - POLYVINYL CHLORIDE CONDUIT BRANCH CKT., & AUXILIARY SCH. 40
4. ALL WIRES SHALL BE COPPER AND THERMOPLASTIC INSULATED TYPE "THW" UNLESS OTHERWISE INDICATED IN THE PLAN. THE MINIMUM SIZE OF WIRE FOR POWER AND LIGHTING CIRCUIT HOMERUN SHALL BE 3.5mm² AND INSULATED FOR 600 VOLTS. SMALLEST RACEWAY SHALL BE 15mmø TRADE/NOMINAL SIZE.
5. ALL OUTLET BOXES SHALL BE GALVANIZED GAGE NO. 16 DEEP TYPE WITH FACTORY KNOCKOUTS.
6. ALL MATERIALS TO BE USED SHALL BE BRAND NEW AND APPROVED TYPE FOR THE PARTICULAR LOCATION AND PURPOSE.
7. GROUNDING SYSTEM SHALL BE PROVIDED TO ALL LIGHTING AND POWER CIRCUIT AS PER PHILIPPINE ELECTRICAL CODE REQUIREMENT.
8. MOUNTING HEIGHT OF WIRING DEVICES SHALL BE AS FOLLOWS :
 - a. LIGHT SWITCH - 1.20 M ABOVE FINISH FLOOR
 - b. CONVENIENCE OUTLET - 0.30 M ABOVE FINISH FLOOR.
 - c. SAFETY SWITCH - 1.80 M ABOVE FINISH FLOOR



1 LIGHTING LAYOUT
E-1 SCALE: 1:100m

LEGEND

SYMBOL	DESCRIPTION
◇	- CEILING LIGHT OUTLET
S/S _a	- ONE GANG DEVICE SWITCH
□	- FLOURESCENT

DRAWN BY :

Junelso P. Cullado
JUNELSON P. CULLADO
CADD OPERATOR
EFD-DepEd

CHECKED BY :

Felix P. Macarandan
FELIX P. MACARANDAN
PROFESSIONAL ELECTRICAL ENGINEER
EFD-DepEd

RECOMMENDING APPROVAL :

Luis G. Purisima, Jr.
LUIS G. PURISIMA, JR.
ASST. CHIEF, EFD-AS
DepEd

APPROVED BY :

Annabelle R. Pangan
ANNABELLE R. PANGAN
CHIEF, EFD-AS
DepEd

PROJECT TITLE :

DEPED SCHOOL BUILDING
LASIP GRANDE ELEMENTARY SCHOOL

DATE PREPARED :

PROJECT CODE :

DSB - MPSS

OWNER :

DEPARTMENT OF EDUCATION
DepED

SHEET CONTENTS :

GEN. NOTES, LEGENDS,
LIGHTING LAYOUT

SHEET NO.:

E-1
1

PROGRAM OF WORKS

DETAILED COST ESTIMATE

PROJECT : PROPOSED REPAIR AND REHABILITATION OF THREE (3) - CLASSROOM SCHOOL BUILDING (RP - US)
 SCHOOL : BLISS ELEMENTARY SCHOOL
 LOCATION : DAGUPAN CITY, PANGASINAN
 OWNER : DEPARTMENT OF EDUCATION
 CONTRACTOR:

ITEM NO.	DESCRIPTION	UNIT	QTY	UNIT COST		TOTAL COST		GRAND TOTAL
				MATERIAL	LABOR	MATERIAL	LABOR	
	GENERAL REQUIREMENTS							
	Mobilization/Temporary Structures, Utilities and Services/Demobilization	lot	1.00					
	Project Billboard	lot	1.00					
	Safety and Health	lot	1.00					
	Fire Safety Inspection Certificate (FSIC)	lot	1.00					
	Other Permit Fee	lot	1.00					
	Sub-total							
	BLDG #1: RP-US BLDG (3CL)							
1.0000	Earthworks							
	Elevate by 1.2m							
1.0400	Gravel Bedding G-1	cu.m	9.60					
1.0600	Soil Poisoning	sq m	206.40					
1.0500	Select Fill	cu.m	192.00					
	Sub-total							
2.0000	Concreting Works							
	Column	cu.m	1.03					
2.0200	Portland Cement	bag	10.00					
2.0500	Washed Sand	cu.m	1.25					
2.0300	Crushed Gravel 3/4"	cu.m	0.75					
	Beams	cu.m	4.32					
2.0200	Portland Cement	bag	39.00					
2.0500	Washed Sand	cu.m	4.50					
2.0300	Crushed Gravel 3/4"	cu.m	2.25					
	Slab on Grade	cu.m	19.20					
2.0200	Portland Cement	bag	173.00					
2.0500	Washed Sand	cu.m	19.25					
2.0300	Crushed Gravel 3/4"	cu.m	9.75					
	Ramp on Fill	cu.m	2.48					
2.0200	Portland Cement	bag	23.00					
2.0500	Washed Sand	cu.m	2.50					
2.0300	Crushed Gravel 3/4"	cu.m	1.25					
	Sub-total							
3.0000	Rebar Works							
	Column	kg	474.00					
	Beam	kg	629.00					
	Slab on Grade	kg	505.02					
	Ramp on Fill	kg	104.54					
3.0100	Deformed Round Bars, Grade 60	kg	1,712.56					
3.1200	G.I. Tie Wire	kg	35.00					
	Sub-total							
4.0000	Formworks							
	Column	sq.m	18.70					
4.0100	Coco Lumber	bd.ft	95.40					
4.0200	Plywood Ordinary, 1/4" x 4' x 8'	pc	4.00					
4.0400	CWN, Assorted	kg	2.00					
	Beams	sq.m	42.10					
4.0100	Coco Lumber	bd.ft	214.80					
4.0200	Plywood Ordinary, 1/4" x 4' x 8'	pc	8.00					
4.0400	CWN, Assorted	kg	4.00					
	Sub-total							
5.0000	Masonry Works							
	Masonry Wall	sq.m	131.55					
5.0200	CHB 6" thk	pc	1,645.00					
2.0200	Portland Cement	bag	66.00					
2.0500	Washed Sand	cu.m	6.00					
5.0400	10mm x 6m RSB	kg	175.00					
3.1200	G.I. Tie Wire	kg	4.00					
	Plastering	sq.m	263.10					
2.0200	Portland Cement	bag	87.00					
2.0500	Washed Sand	cu.m	9.00					
	Sub-total							
8.0000	Roofing Works							
8.0100	Removal of Roofing Sheets	sq m	192.00					
8.0200	Removal of Ridge Roll	pc	9.00					
8.0300	Removal of Flashing	pc	15.00					
8.0500	Removal of Fascia Board	pc	30.00					
	G.I. Long-Span Roofing, Corrugated, Pre-Painted, 1220mm x 0.5mm BMT	lm	247.50					
	G.I. Flashing, Preformed, Pre-Painted, 0.610m x 2.440m x 0.5mm BMT	pc	10.00					
	G.I. Ridge Roll, Preformed, Pre-Painted, 0.610m x 2.440m x 0.5mm BMT	pc	9.00					

ITEM NO.	DESCRIPTION	UNIT	QTY	UNIT COST		TOTAL COST		GRAND TOTAL
				MATERIAL	LABOR	MATERIAL	LABOR	
9.1430	Fascia Board, Fiber Cement 12" x 8'	pc	30.00					
7.1040	L 20 x 20 x 2mm	kg	133.50					
7.1020	L 38 x 38 x 4.5mm	kg	99.00					
	3" Flat head Countersunk screw	pc	510.00					
8.0900	J-Bolt (6mm dia.)	pc	1,512.00					
	Teckscrew 2-3/4"	pc	1,980.00					
8.1300	Roof Sealant	L	2.00					
	Sub-total							
7.0000	Steel works							
	<i>Trusses and Members</i>							
9.0070	Removal of Wooden Truss/ Beams	bd.ft	1,236.00					
9.0080	Removal of Purlins	bd.ft	832.50					
7.0900	L 50 x 50 x 6mm	kg	1,720.50					
7.0200	2" x 4" x 1.5mm C - purlins	kg	1,375.50					
7.1010	L 50 x 50 x 2mm	kg	33.00					
7.1810	Machine Bolts (10 mm dia.)	pc	390.00					
7.2200	12mmØ Sag Rods with Standard Nuts and Washers	pc	144.00					
7.1900	Plain Round Bar 16mmØ x 6m	pc	25.50					
7.2000	Turn Buckle 16 mmØ	pc	24.00					
	Anchor Bolt with Nuts and Washer, 12mmØ x 50mm x 300mm	pc	60.00					
7.1100	Steel Plate 1.20m x 2.40m x 6mm thk	pc	2.25					
7.1200	Steel Plate 1.20m x 2.40m x 10mm thk	pc	0.75					
7.3600	Welding Rod	kg	69.00					
13.1100	Primer, Zinc Chromate	gal	7.50					
	Sub-total							
9.0000	Carpentry works							
	Interior Ceiling		144.00					
9.0100	Removal of Ceiling	sq.m	144.00					
9.0500	Plywood, Marine 1/4" x 4' x 8'	pc	51.00					
	50 mm x 50 mm Ceiling Joist	bd.ft	288.73					
	50 mm x 75 mm Ceiling Joist	bd.ft	442.94					
9.1700	Rough Lumber, Sun Dried, Tanguile	bd.ft	731.66					
9.2100	Finishing Nails	kg	3.00					
4.0400	CWN, Assorted	kg	13.50					
9.2200	Concrete Nails	kg	3.00					
9.1900	Wood Preservative, Brown	L	4.00					
9.2100	Finishing Nails	kg	2.00					
4.0400	CWN, Assorted	kg	7.00					
9.2200	Concrete Nails	kg	2.00					
9.1900	Wood Preservative, Brown	L	3.00					
	<i>Blackboards</i>							
9.1800	S4S Lumber, Kiln Dried, Tanguile	bd.ft	111.00					
9.2000	Lawanit, 1/4" thk	pc	6.00					
9.2100	Finishing Nails	kg	2.00					
4.0400	CWN, Assorted	kg	3.00					
9.2200	Concrete Nails	kg	2.00					
	Sub-total							
10.0000	Electrical Works							
	<i>Roughing-ins</i>							
10.0100	Electrical Conduit uPVC, 15mmØ	pc	36.00					
10.0490	RSC 20mmØ	pc	1.00					
10.0800	Entrance Cap 20mm dia.	pc	1.00					
10.1200	Junction Box, 4" x 4" G.I.	pc	12.00					
10.1300	Utility Box, 2" x 4" G.I.	pc	6.00					
	<i>Wires & Fixtures</i>							
10.1600	3.5 mm² THHN Wire, Stranded	m	330.00					
10.2700	Duplex Convenience Outlet, Grounding Type, 20A, 250V	set	6.00					
10.3200	3 Single Pole Wall Switches in One Switch Plate (10 AMP, 230V)	set	3.00					
10.3610	FL 1 x 40W Industrial Type	set	15.00					
10.5600	Fire Extinguisher 10 lbs	pc	1.00					
10.3310	Safety Switch 30A 2P	set	2.00					
10.5500	Electrical Tape	pc	3.00					
10.5400	Wall Fan, 60W, 230V, 60Hz	set	6.00					
10.5600	Ceiling Fan, 60W, 230V, 60Hz	set	3.00					
	Sub-total							
6.0000	Doors and Windows							
6.0100	Removal of Door with Jamb	set	3.00					
6.0200	Removal of Window with Jamb	sq.m	33.00					
6.0600	Door Jamb	bd.ft	66.00					
6.0330	D-2, (0.90m x 2.10m) Panel Door	set	6.00					
6.0410	D-3, (0.70m x 2.10m) Flush Door	set	3.00					
6.2000	Hinges, Standard 3-1/2" x 3-1/2"	pa	12.00					
6.1900	Entrance, Lever Lockset	set	6.00					
6.0700	Window Jamb	bd.ft	268.00					
6.1009	Jalousie Window with Clear Glass Blades on Jalousie Type Silver Colored Frame with Grilles	sq.ft	380.00					
	Sub-total							
11.0000	Plumbing Works							
11.0210	Water Closet, Manual Flush Type	set	3.00					
11.0400	Concrete Counter Sink Type, with Lever Type Faucet and Complete Accessories	set	3.00					
11.0500	Faucet, Hose Bibb, Brass 1/2"Ø	pc	3.00					

ITEM NO.	DESCRIPTION	UNIT	QTY	UNIT COST		TOTAL COST		GRAND TOTAL
				MATERIAL	LABOR	MATERIAL	LABOR	
11.0100	Water Closet Flange	set	3.00					
11.4300	Tissue Holder	pc	3.00					
11.1000	PP-R Pipe 3/4"Ø x 4.0m	pc	12.00					
11.1500	PP-R Coupling, 3/4"Ø	pc	12.00					
11.2100	PP-R Elbow 90o x 3/4"Ø	pc	1.00					
11.1700	PP-R Coupling Reducer, 1/2" x 3/4"Ø	pc	1.00					
11.1100	PP-R Pipe 1/2"Ø x 4.0m	pc	12.00					
11.2200	PP-R Elbow 90o x 1/2"Ø	pc	18.00					
11.1600	PP-R Coupling, 1/2"Ø	pc	8.00					
11.2700	PP-R Tee, 1/2"Ø	pc	16.00					
11.3800	Gate Valve, 3/4"Ø	pc	1.00					
11.4410	S.S.Floor Drain 4' x 4"	pc	3.00					
11.4500	Mirror	pc	3.00					
	Sub-total							
12.0000	Sanitary Works							
12.0111	Three Chamber Septic Vault (2.40m x 1.50m x 1.80m)	unit	1.00					
	Sub-total							
13.0000	Painting Works							
	Concrete surfaces	sq.m	397.50					
13.0100	Neutralizer	gal	21.00					
13.0200	Latex, Flat	gal	40.50					
13.0300	Masonry Putty	gal	16.50					
13.0400	Latex, Semi Gloss	gal	15.00					
13.0500	Acri Color	qrt	9.00					
	Interior Ceiling	sq.m	144.00					
13.0600	Enamel, Flatwall	gal	8.00					
13.0800	Enamel, Semi Gloss	gal	8.00					
13.0700	Glazing Putty	gal	8.00					
13.0900	Paint Thinner	gal	4.00					
	Doors and Windows Jambes	sq.m	55.50					
13.0600	Enamel, Flatwall	gal	3.00					
13.0700	Glazing Putty	gal	3.00					
13.0800	Enamel, Semi Gloss	gal	6.00					
13.0900	Paint Thinner	gal	3.00					
	Sub-total							
14.0000	Tile Works							
	Flooring	sq.m	174.75					
14.0110	Unglazed Floor Tiles 20cm x 20cm (CR)	pc	174.00					
14.0120	Unglazed Floor Tiles 60cm x 60cm	pc	481.00					
14.0300	Tile Adhesive 25 kg/bag	bag	32.00					
14.0500	Tile Grout 5 kg/bag	bag	14.00					
	Sub-total							
	Ramp on Fill (with Ramp Railing)	cu.m	0.54					
2.0200	Portland Cement	bag	5.00					
2.0400	Crushed Gravel 1"	cu.m	0.75					
2.0500	Washed Sand	cu.m	0.50					
5.0400	10mm x 6m RSB	kg	23.28					
3.1200	G.I. Tie Wire	kg	1.00					
7.2610	G.I. Pipe 1-½"Ø Sch. 40	pc	6.00					
7.3600	Welding Rod	kg	3.00					
	Sub-total							
I.	DIRECT COST							
II.	INDIRECT COST (I - Gen. Req.)							
III.	TAX 5% of (I + II)							
IV.	TOTAL CONSTRUCTION COST (I + II + III)							

Prepared by:

Contractor's Representative